



**December Quarter 1994  
Employed Wage and  
Salary Earners  
Australia**

**Catalogue No. 6248.0**

At the bottom of the page, there are two thick, black, horizontal bars. The top bar is solid black. The bottom bar is also black but has a textured, stippled appearance in its center, possibly representing a barcode or a decorative element.



**EMBARGOED UNTIL 11.30 A.M. 18 OCTOBER 1995**

**EMPLOYED WAGE AND SALARY EARNERS  
AUSTRALIA  
DECEMBER QUARTER 1994**

**W. McLennan  
Australian Statistician**

**AUSTRALIAN BUREAU OF STATISTICS**

**CATALOGUE NO. 6248.0**

© Commonwealth of Australia 1995

## CONTENTS

<i>Table</i>	<i>Page</i>
.. Summary of Findings	1
1 Employed wage and salary earners, States and Territories, persons — trend series	4
2 Employed wage and salary earners, States and Territories, persons — seasonally adjusted series	5
3 Employed wage and salary earners, States and Territories, persons — original	6
4 Gross Earnings, States and Territories, sectors — original	7
<b>Employed wage and salary earners—</b>	
5 States and Territories, sectors — trend series	8
6 States and Territories, sectors — seasonally adjusted series	9
7 States and Territories, sectors — original	10
8 States and Territories, public institutional sector — original	11
9 Australia, public institutional sector and industry, persons — original	12
10 Australia, public institutional sector and industry, gross earnings — original	12
11 Full-time and part-time, November 1994 — original	13
12 Australia, industry — trend series	14
13 Australia, industry — seasonally adjusted series	14
14 Australia, sector and industry — original	15
15 New South Wales, sector and industry — original	18
16 Victoria, sector and industry — original	19
17 Queensland, sector and industry — original	20
18 South Australia, sector and industry — original	21
19 Western Australia, sector and industry — original	22
20 Tasmania, sector and industry — original	23
21 Northern Territory, industry — original	24
22 Australian Capital Territory, industry — original	24
23 Private sector, employer unit size — original	25
.. Explanatory Notes	26
<b>Appendixes</b>	
1 Technical Note	29
2 Glossary	32

### INQUIRIES

- for further information about statistics in this publication and the availability of related unpublished statistics, contact Ken Clarke on Perth (09) 360 5141 or any ABS State office.
- for information about other ABS statistics and services please refer to the back page of this publication.

#### **SPECIAL NOTE**

The release of this bulletin has been significantly delayed owing to ABS efforts to present industry data classified according to the revised industry classification, Australian and New Zealand Standard Industrial Classification (ANZSIC). This work is not yet completed and to avoid further delay industry estimates in this edition of the bulletin are presented on the basis of the former industry classification, Australian Standard Industrial Classification (ASIC). It is expected that the industry data based on ANZSIC will now be introduced in the June quarter 1995 bulletin.

## SUMMARY OF FINDINGS

NOTE: The estimates presented in this publication are obtained from the Survey of Employment and Earnings (SEE), a survey of employers conducted quarterly. The ABS publishes a number of independently obtained series of employment estimates, including those from the monthly Labour Force Survey (LFS). The difference between estimates of wage and salary earners in SEE and LFS increased substantially over the two years to June 1994, but has stabilised over the past six months. For further information on the comparability of the two surveys, see paragraphs 22 to 27 of the Explanatory Notes.

### TREND ESTIMATES

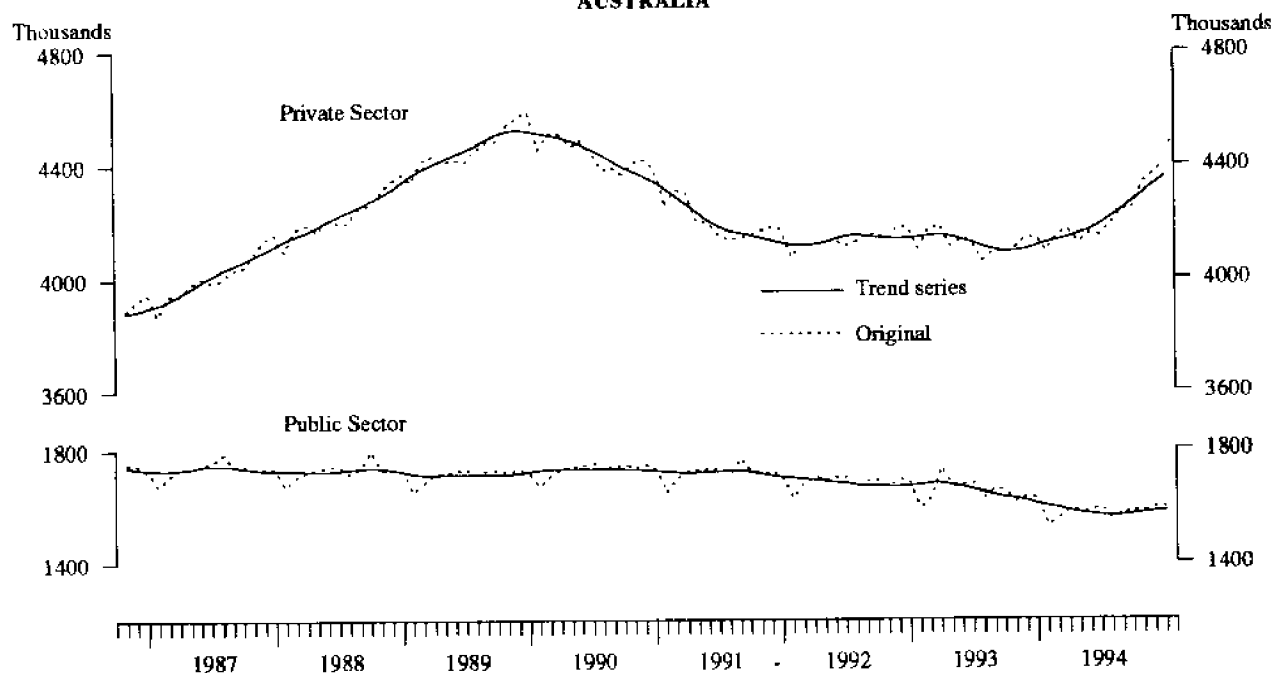
#### Private sector

In the private sector the number of employees grew steadily to a peak of 4,523,100 in November 1989 and then fell steadily to a trough of 4,115,400 in February 1992. Since February 1992 the number of employees fluctuated over a small range, falling to 4,093,200 in October 1993 before commencing a steady increase to 4,355,700 in December 1994. This represents an increase of 6.4% in this period. Over the same period only Tasmania recorded a decrease (9.6%). The increases in the other States were: New South Wales 5.9%, Victoria 12.6%, Queensland 5.3%, South Australia 2.4%, Western Australia 0.4%, Northern Territory 20.7% and the Australian Capital Territory 1.3%.

#### Public sector

In the public sector the number of employees remained relatively steady over the five years to April 1990. It then fell steadily from 1,734,800 in April 1990 to 1,566,900 in July 1994, a decrease of 9.7%. Since then there has been a gradual increase to 1,585,100 in December 1994. For the period from April 1990 to December 1994 increases occurred in Queensland (4.1%) and the Australian Capital Territory (5.2%). For the same period the remaining six States have shown a decrease, the largest being in Victoria (20.0%).

DIAGRAM 1. EMPLOYED WAGE AND SALARY EARNERS, SECTORS AUSTRALIA



Source: See Tables 1 & 3

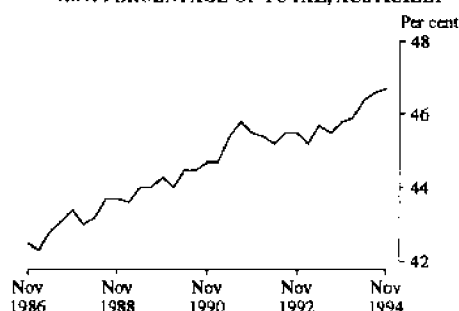
## ORIGINAL ESTIMATES

**Male and female wage and salary earners**

Estimates of male and female wage and salary earners relate to the middle month of each quarter and are presented only in original terms rather than trend.

Diagram 2 shows the number of female wage and salary earners as a proportion of total wage and salary earners. Throughout the eight years from November 1986 to November 1994 this proportion has continued a steady rise from 42.5 per cent to 46.7 per cent.

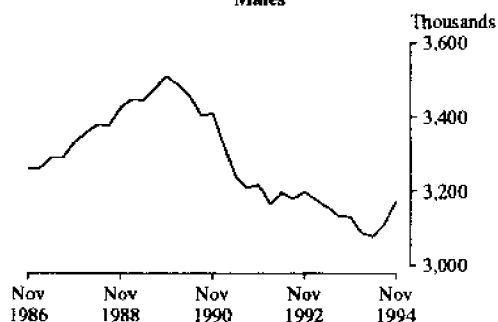
**DIAGRAM 2. FEMALE WAGE AND SALARY EARNERS AS A PERCENTAGE OF TOTAL, AUSTRALIA**



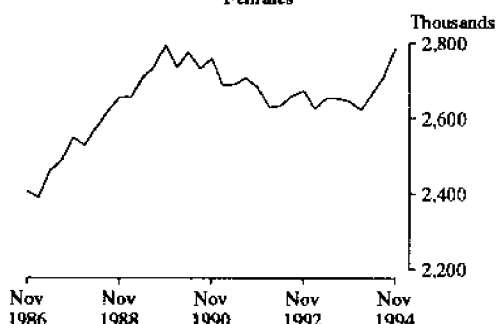
Source: See Table 7.

Diagram 3 shows the number of male and female employees in Australia over the last eight years. The number of male employees rose from 3,261,900 in November 1986 to a peak of 3,508,600 in November 1989. It then fell to 3,078,700 in May 1994, before moving upwards by 96,700 to 3,175,400 in November 1994. The number of female employees also rose from November 1986 (2,408,900) to a peak in November 1989 (2,793,200), and then fell to 2,618,900 in August 1993. In the twelve

**DIAGRAM 3. EMPLOYED WAGE AND SALARY EARNERS AUSTRALIA**  
**Males**



**Females**



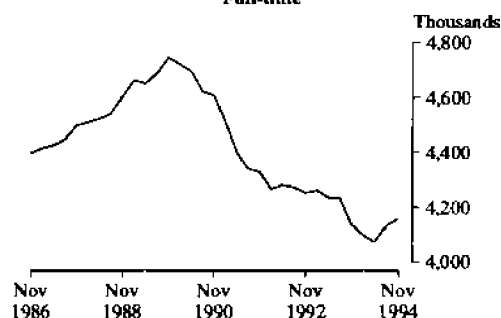
Source: See Table 7.

months to November 1994 the number of female employees rose again, by 139,200, to 2,785,300.

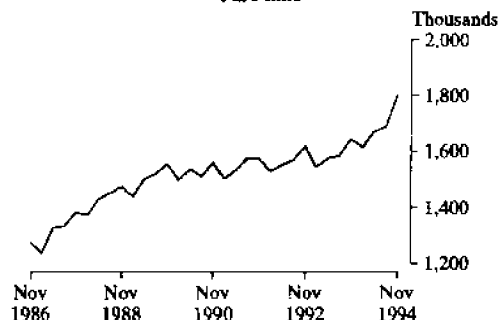
**Full-time and part-time wage and salary earners**

Estimates of full-time and part-time wage and salary earners also relate to the middle month of each quarter and are presented only in original terms.

**DIAGRAM 4. EMPLOYED WAGE AND SALARY EARNERS PERSONS, AUSTRALIA**  
**Full-time**



**Part-time**



Source: See Table 11

Diagram 4 shows the number of full-time and part-time employees over the previous eight years.

The number of full-time employees grew steadily over a number of years to a peak of 4,745,600 in November 1989 and has since fallen to a low of 4,075,400 in May 1994, rising again by 83,800 to 4,159,200 in November 1994.

The number of part-time employees also grew steadily over a number of years to 1,556,200 in November 1989. In contrast to full-time employees, the number of part-time employees continued to rise after November 1989, to 1,801,500 in November 1994, including a rise of 158,900 in the last twelve months.



### Employer unit size

Estimates presented in Table 23 show the distribution of employees in the private sector employer units over three size ranges.

#### *Less than 20 employees:*

As illustrated in Diagram 5, over the seven year period from November 1987 to November 1994 the number of employees in the private sector employed by organisations with less than 20 employees showed a rise from 1,361,900 to a temporary peak of 1,480,300 in August 1989. After a fall to a low of 1,378,600 in February 1991 the number of employees grew to 1,530,600 in November 1992, fell again to 1,435,700 in May 1994, and has since risen to 1,534,100 in November 1994.

#### *20 to 99 employees:*

As illustrated in Diagram 5 the employment levels in the 20-99 range rose from 962,100 in November 1987 to a

peak of 1,042,300 in November 1989 and has since fallen to 939,500 in November 1994.

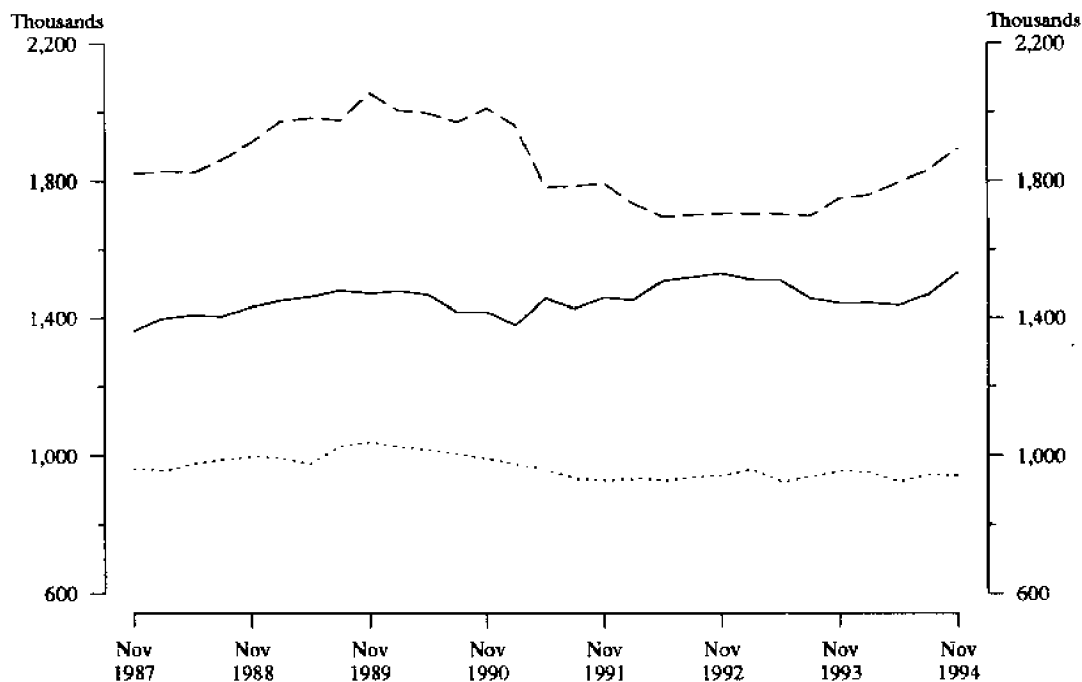
#### *100 plus employees:*

For the 100 plus employee category, Diagram 5 shows a peak of 2,056,400 in November 1989. The level of employment subsequently fell by 17.6 per cent to 1,694,900 in May 1992, remained steady until August 1993, and has since risen by 11.6% to 1,893,900 in November 1994.

### Earnings

Total earnings for employed wage and salary earners in the December quarter 1994 in original terms was estimated as \$44,228.5m. This was an increase of \$2,208.2m (5.3%) since the September quarter 1994 and an increase of \$1,971.0m (4.7%) since the December quarter 1993.

DIAGRAM 5. EMPLOYED WAGE AND SALARY EARNERS, AUSTRALIA  
PRIVATE SECTOR, EMPLOYER SIZE



Source: See Table 23.

— 1-19 Employees  
 ..... 20-99 Employees  
 - - - 100+ Employees

TABLE 1. EMPLOYED WAGE AND SALARY EARNERS, STATES AND TERRITORIES, PERSONS — TREND  
(\*000)

Month	NSW	Vic.	Qld	SA	WA	Tas.	NT	ACT	Aust.
PRIVATE									
1990-December	1,554.5	1,222.7	642.1	374.4	356.7	97.9	39.8	55.2	4,343.2
1991-December	1,454.4	1,139.0	634.0	345.1	359.9	97.2	37.0	59.1	4,125.6
1992-December	1,456.2	1,116.5	660.9	328.4	387.1	96.1	36.4	60.2	4,141.6
1993—									
November	1,447.1	1,054.6	675.5	336.3	393.1	99.9	33.2	60.2	4,099.8
December	1,451.7	1,053.8	683.3	338.2	392.2	98.2	33.9	59.9	4,111.2
1994—									
January	1,456.2	1,056.3	689.5	339.4	391.0	96.6	34.7	59.1	4,122.9
February	1,460.7	1,061.9	693.0	339.1	389.1	95.4	35.4	58.0	4,132.6
March	1,465.4	1,072.2	693.2	337.2	386.9	94.9	35.9	56.8	4,142.6
April	1,469.6	1,086.8	689.5	334.8	385.5	94.9	36.2	56.1	4,153.5
May	1,473.5	1,104.7	683.0	333.0	385.9	95.2	36.4	55.9	4,167.7
June	1,477.2	1,124.1	675.8	332.7	388.5	95.4	36.7	56.4	4,186.8
July	1,481.8	1,142.1	671.4	334.2	392.2	95.2	37.1	57.4	4,211.3
August	1,487.9	1,157.0	671.8	336.8	395.7	94.7	37.6	58.4	4,239.9
September	1,496.2	1,168.4	676.4	339.1	397.7	94.0	38.1	59.3	4,269.3
October	1,506.1	1,177.7	683.9	340.6	397.9	93.3	38.6	60.0	4,298.2
November	1,516.7	1,186.0	692.9	341.7	397.5	92.5	39.1	60.5	4,326.9
December	1,528.2	1,193.0	703.3	342.4	396.5	91.8	39.6	60.9	4,355.7
PUBLIC									
1990-December	556.3	448.7	265.5	152.8	160.1	50.0	22.2	71.8	1,727.3
1991-December	548.2	432.3	269.4	147.7	160.8	48.8	21.2	74.2	1,702.6
1992-December	531.8	423.2	274.9	142.8	161.3	46.8	19.9	72.3	1,672.9
1993—									
November	520.6	384.5	275.6	139.7	156.9	46.2	20.4	74.3	1,617.7
December	517.9	380.9	275.0	139.0	155.9	45.9	20.5	73.9	1,608.9
1994—									
January	514.1	378.1	274.0	138.5	155.2	45.6	20.5	73.5	1,599.8
February	509.8	376.2	272.8	138.0	154.6	45.2	20.6	73.3	1,590.9
March	506.3	374.8	271.3	137.4	153.9	44.9	20.6	73.2	1,583.0
April	503.7	373.7	269.8	136.8	153.1	44.6	20.6	73.2	1,576.1
May	502.9	373.0	268.3	135.9	152.2	44.3	20.6	73.2	1,570.8
June	504.1	372.4	267.0	134.9	151.6	44.1	20.5	73.0	1,567.7
July	506.3	371.6	266.4	133.9	151.7	44.0	20.5	72.8	1,566.9
August	508.7	370.5	266.5	133.1	152.5	44.1	20.6	72.7	1,568.1
September	510.9	369.2	267.4	132.6	153.9	44.3	20.7	72.9	1,571.2
October	512.8	367.7	268.9	132.4	155.6	44.5	20.9	73.3	1,575.5
November	514.4	366.0	270.5	132.3	157.3	44.8	21.0	73.8	1,580.1
December	516.0	364.3	272.1	132.3	158.7	45.0	21.2	74.4	1,585.1
PRIVATE AND PUBLIC									
1990-December	2,110.8	1,671.5	907.5	527.2	516.8	147.9	62.0	127.0	6,070.6
1991-December	2,002.6	1,571.3	903.4	492.7	520.7	146.0	58.3	133.2	5,828.2
1992-December	1,987.9	1,539.7	935.8	471.1	548.3	143.0	56.3	132.4	5,814.6
1993—									
November	1,967.6	1,439.0	951.1	476.0	550.0	146.1	53.6	134.5	5,717.5
December	1,969.6	1,434.7	958.2	477.3	548.1	144.1	54.4	133.8	5,720.1
1994—									
January	1,970.3	1,434.5	963.6	477.8	546.2	142.2	55.3	132.6	5,722.7
February	1,970.6	1,438.1	965.8	477.0	543.7	140.7	56.0	131.3	5,723.5
March	1,971.7	1,447.0	964.5	474.7	540.8	139.8	56.5	130.0	5,725.6
April	1,973.3	1,460.6	959.3	471.5	538.6	139.5	56.8	129.3	5,729.5
May	1,976.4	1,477.7	951.3	468.9	538.1	139.5	57.0	129.1	5,738.5
June	1,981.3	1,496.4	942.9	467.6	540.0	139.5	57.2	129.5	5,754.5
July	1,988.1	1,513.7	937.8	468.1	543.8	139.2	57.6	130.2	5,778.3
August	1,996.6	1,527.5	938.2	469.9	548.2	138.8	58.2	131.2	5,807.9
September	2,007.0	1,537.6	943.8	471.8	551.6	138.3	58.8	132.3	5,840.5
October	2,018.9	1,545.4	952.8	473.0	553.6	137.8	59.5	133.3	5,873.7
November	2,031.1	1,552.0	963.4	474.0	554.8	137.3	60.1	134.3	5,907.0
December	2,044.2	1,557.3	975.4	474.7	555.2	136.9	60.8	135.3	5,940.8

TABLE 2. EMPLOYED WAGE AND SALARY EARNERS, STATES AND TERRITORIES, PERSONS — SEASONALLY ADJUSTED  
('000)

Month	NSW	Vic.	Qld	SA	WA	Tas.	NT	ACT	Aust.
PRIVATE									
1990-December	1,551.1	1,230.3	646.5	369.0	356.2	96.0	40.1	55.2	4,344.3
1991-December	1,453.9	1,133.5	633.0	354.1	361.2	97.9	38.5	57.7	4,129.9
1992-December	1,456.2	1,114.0	660.0	329.4	383.6	95.9	36.0	60.2	4,135.3
1993—									
November	1,448.8	1,055.2	675.0	337.8	391.4	100.7	32.8	60.8	4,102.4
December	1,455.6	1,049.2	683.0	329.0	390.5	100.1	33.2	61.5	4,102.1
1994—									
January	1,463.6	1,058.8	690.7	346.4	390.5	93.5	35.8	58.1	4,137.3
February	1,448.4	1,062.2	700.6	343.3	395.4	94.8	36.0	58.1	4,138.7
March	1,467.5	1,066.1	693.3	341.2	396.0	95.8	36.2	58.2	4,154.4
April	1,466.8	1,094.4	683.3	330.2	376.3	94.2	36.1	54.1	4,135.4
May	1,480.3	1,100.9	685.8	329.2	379.9	95.6	35.9	55.5	4,163.1
June	1,480.5	1,107.4	690.0	330.9	380.8	95.9	35.4	55.9	4,176.8
July	1,482.9	1,156.0	661.9	332.6	399.8	95.1	38.7	57.8	4,224.8
August	1,482.2	1,173.5	662.9	339.1	402.5	95.3	37.3	59.0	4,251.8
September	1,480.9	1,163.1	660.9	343.4	401.1	94.7	37.7	59.9	4,241.7
October	1,516.6	1,178.4	692.5	339.8	394.5	92.1	38.9	60.0	4,312.9
November	1,519.9	1,179.4	699.6	340.9	393.1	92.1	38.8	60.3	4,324.0
December	1,532.4	1,189.4	712.2	340.0	395.4	92.3	39.9	60.3	4,361.9
PUBLIC									
1990-December	557.9	448.6	265.4	153.2	158.5	50.5	22.3	72.2	1,728.6
1991-December	547.0	433.0	266.8	146.1	160.3	48.5	21.2	76.2	1,699.2
1992-December	533.2	424.8	278.5	142.4	161.3	46.2	19.8	72.4	1,678.8
1993—									
November	523.3	383.5	275.9	139.8	155.1	46.1	20.2	74.9	1,619.4
December	525.0	382.5	278.5	139.8	157.4	46.7	20.4	74.6	1,625.1
1994—									
January	515.7	375.3	272.1	138.2	155.1	45.5	20.6	72.6	1,595.2
February	505.7	376.0	271.9	137.0	154.8	44.9	20.6	72.4	1,582.8
March	505.9	376.4	271.4	137.3	153.3	44.7	20.4	73.5	1,583.8
April	500.2	373.7	270.2	137.4	154.0	44.7	20.6	73.3	1,574.9
May	505.6	373.5	268.1	136.8	152.4	44.6	20.7	73.9	1,576.4
June	501.5	371.5	270.9	135.2	151.6	44.7	20.7	73.6	1,570.9
July	508.0	369.5	261.5	133.0	151.2	43.2	20.4	71.7	1,557.7
August	510.0	372.5	266.4	132.8	151.4	43.0	20.4	72.7	1,568.1
September	508.0	372.5	266.9	132.2	151.6	44.8	20.6	72.8	1,568.1
October	516.7	366.1	268.2	132.2	157.9	44.9	20.9	73.2	1,579.2
November	512.7	363.8	271.6	133.1	157.8	45.2	21.2	73.1	1,579.3
December	516.4	364.7	274.6	132.6	160.4	44.8	21.3	75.9	1,591.0
PRIVATE AND PUBLIC									
1990-December	2,108.9	1,678.9	911.9	522.2	514.7	146.5	62.5	127.4	6,072.9
1991-December	2,000.8	1,566.5	899.8	500.2	521.6	146.4	59.8	133.9	5,829.1
1992-December	1,989.4	1,538.9	938.4	471.9	544.9	142.1	55.8	132.6	5,814.2
1993—									
November	1,972.1	1,438.7	950.8	477.6	546.5	146.8	53.0	135.6	5,721.8
December	1,980.7	1,431.7	961.5	468.7	547.9	146.8	53.6	136.1	5,727.2
1994—									
January	1,979.3	1,434.1	962.8	484.5	545.6	138.9	56.4	130.7	5,732.5
February	1,954.1	1,438.2	972.4	480.4	550.1	139.7	56.6	130.5	5,721.6
March	1,973.4	1,442.5	964.7	478.5	549.3	140.5	56.7	131.7	5,738.2
April	1,967.0	1,468.1	953.5	467.6	530.4	138.9	56.7	127.4	5,710.3
May	1,986.0	1,474.4	953.9	466.0	532.3	140.2	56.6	129.4	5,739.5
June	1,982.0	1,478.9	960.9	466.1	532.4	140.6	56.1	129.5	5,747.7
July	1,990.9	1,525.4	923.4	465.6	551.0	138.3	59.1	129.5	5,782.4
August	1,992.2	1,546.0	929.2	471.9	553.9	138.3	57.8	131.7	5,819.9
September	1,988.9	1,535.6	927.8	475.6	552.7	139.5	58.3	132.7	5,809.8
October	2,033.3	1,544.5	960.8	472.0	552.4	137.0	59.8	133.2	5,892.1
November	2,032.6	1,543.2	971.2	474.0	550.9	137.4	59.9	133.4	5,903.2
December	2,048.7	1,554.1	986.8	472.6	555.8	137.1	61.2	136.3	5,952.9

TABLE 3. EMPLOYED WAGE AND SALARY EARNERS, STATES AND TERRITORIES, PERSONS  
(<sup>'000</sup>)

Month	NSW	Vic.	Qld	SA	WA	Tas.	NT	ACT	Aust.
PRIVATE									
1990-December	1,572.7	1,243.8	651.6	367.5	360.4	97.2	39.6	55.9	4,388.7
1991-December	1,475.0	1,145.1	638.7	352.8	364.9	98.8	38.1	58.5	4,171.9
1992-December	1,477.9	1,124.6	666.3	328.4	387.2	96.6	35.7	61.0	4,177.7
1993—									
November	1,466.3	1,063.3	687.8	338.2	392.8	100.4	33.8	61.1	4,143.7
December	1,477.4	1,058.4	689.6	328.0	393.9	100.7	32.9	62.4	4,143.3
1994—									
January	1,445.0	1,048.3	684.0	345.7	386.8	93.0	33.3	56.0	4,092.0
February	1,458.9	1,068.6	697.6	346.4	393.8	95.9	34.4	57.5	4,153.0
March	1,466.5	1,078.3	694.7	344.3	396.5	96.6	34.9	57.9	4,169.5
April	1,464.1	1,085.8	677.8	331.7	378.7	94.7	35.4	54.7	4,122.9
May	1,471.9	1,098.6	682.9	331.6	383.6	96.1	36.0	56.3	4,156.9
June	1,468.7	1,098.7	685.4	329.2	382.9	95.1	36.1	55.9	4,151.9
July	1,469.3	1,147.8	655.4	331.7	395.3	94.8	39.0	57.3	4,190.6
August	1,478.9	1,169.0	662.2	338.2	401.7	94.6	38.9	59.2	4,242.6
September	1,481.0	1,168.0	658.3	340.7	398.9	94.4	39.5	59.8	4,240.7
October	1,525.4	1,178.8	704.4	337.4	393.3	91.4	40.1	60.8	4,331.5
November	1,538.2	1,188.3	712.8	341.3	394.4	91.8	40.0	60.6	4,367.5
December	1,555.2	1,199.5	719.1	339.1	398.8	92.8	39.5	61.2	4,405.2
PUBLIC									
1990-December	556.7	452.2	264.0	154.1	157.4	51.2	22.4	71.9	1,729.9
1991-December	546.2	437.1	265.5	147.0	159.5	49.2	21.3	75.8	1,701.5
1992-December	532.5	429.3	277.4	143.3	160.7	46.8	19.9	72.1	1,681.9
1993—									
November	527.9	388.6	278.0	140.5	157.0	46.8	20.3	74.7	1,633.8
December	524.4	386.7	277.4	140.6	157.1	47.2	20.5	74.3	1,628.1
1994—									
January	491.0	363.6	262.0	131.9	148.4	42.5	20.2	71.8	1,531.4
February	499.0	369.1	269.2	135.4	152.7	42.3	20.2	72.2	1,560.1
March	512.3	373.2	274.0	137.4	154.0	44.6	20.4	73.8	1,589.8
April	504.5	372.3	271.3	138.2	154.7	44.8	20.6	73.8	1,580.2
May	513.0	374.2	269.8	137.7	152.7	45.5	20.9	74.5	1,588.3
June	510.8	374.0	274.2	137.2	154.9	45.0	21.0	74.6	1,591.7
July	501.1	369.7	261.7	133.3	150.9	44.5	20.4	71.6	1,553.1
August	512.8	376.0	267.1	133.0	152.0	44.2	20.4	72.5	1,578.0
September	513.0	377.8	267.2	133.4	153.2	44.8	20.7	72.7	1,582.8
October	514.9	367.7	269.9	132.7	158.3	45.4	21.0	72.8	1,582.8
November	517.3	368.7	273.7	133.7	159.6	46.0	21.3	73.0	1,593.3
December	515.9	368.8	273.6	133.4	160.1	45.2	21.4	75.6	1,593.9
PRIVATE AND PUBLIC									
1990-December	2,129.4	1,696.0	915.6	521.6	517.9	148.4	62.0	127.9	6,118.6
1991-December	2,021.2	1,582.1	904.2	499.9	524.4	147.9	59.4	134.3	5,873.4
1992-December	2,010.4	1,553.9	943.7	471.7	547.9	143.4	55.6	133.0	5,859.6
1993—									
November	1,994.2	1,451.8	965.7	478.7	549.8	147.2	54.1	135.9	5,777.5
December	2,001.7	1,445.1	967.1	468.7	551.0	147.9	53.4	136.6	5,771.4
1994—									
January	1,936.0	1,411.9	945.9	477.6	535.2	135.6	53.5	127.8	5,623.4
February	1,957.9	1,437.7	966.7	481.8	546.5	138.3	54.5	129.7	5,713.2
March	1,978.8	1,451.5	968.7	481.7	550.5	141.2	55.3	131.7	5,759.4
April	1,968.6	1,458.1	949.0	469.9	533.4	139.5	56.0	128.5	5,703.1
May	1,984.9	1,472.8	952.7	469.3	536.2	141.6	56.9	130.8	5,745.2
June	1,979.5	1,472.7	959.6	466.4	537.8	140.1	57.1	130.5	5,743.6
July	1,970.4	1,517.5	917.1	465.0	546.2	139.3	59.3	128.9	5,743.7
August	1,991.7	1,545.0	929.2	471.2	553.6	138.9	59.3	131.7	5,820.6
September	1,994.0	1,545.8	925.6	474.1	552.2	139.2	60.2	132.5	5,823.5
October	2,040.3	1,546.5	974.3	470.1	551.6	136.7	61.1	133.6	5,914.3
November	2,055.5	1,557.0	986.5	475.0	554.0	137.8	61.3	133.6	5,960.8
December	2,071.0	1,568.3	992.7	472.5	558.8	138.0	60.9	136.8	5,999.1

TABLE 4. GROSS EARNINGS, STATES AND TERRITORIES, SECTORS  
(\$m)

Year/Quarter	NSW	Vic.	Qld	SA	WA	Tas.	NT	ACT	Aust.
PRIVATE									
1990-91	39,982.4	30,123.4	14,589.8	8,156.1	8,698.3	2,197.8	964.9	1,219.6	105,932.3
1991-92	39,513.3	28,614.4	15,025.2	7,873.7	9,160.4	2,289.1	879.5	1,377.8	104,733.6
1992-93	40,048.1	29,233.8	16,399.8	7,911.9	10,311.9	2,329.1	832.4	1,360.4	108,427.3
1993-94	40,901.1	29,074.9	16,379.2	8,319.9	10,851.0	2,261.3	829.9	1,290.8	109,908.2
1992—									
June	10,022.5	7,235.6	3,863.6	1,940.2	2,415.2	566.6	194.1	376.4	26,614.1
September	9,979.2	7,314.0	4,012.5	1,932.4	2,514.3	577.0	210.3	367.5	26,907.1
December	10,331.7	7,562.3	4,264.7	2,066.0	2,577.2	590.0	212.3	337.8	27,941.9
1993—									
March	9,826.5	7,115.1	3,914.8	1,912.9	2,494.1	564.6	191.0	312.7	26,331.6
June	9,910.7	7,242.5	4,207.8	2,000.7	2,726.3	597.6	218.8	342.4	27,246.7
September	9,946.2	7,195.0	3,960.4	2,094.3	2,764.8	578.4	214.3	330.7	27,084.3
December	10,498.9	7,253.0	4,198.3	2,167.2	2,753.4	597.8	203.0	352.2	28,023.9
1994—									
March	9,929.5	6,976.1	3,982.1	2,087.6	2,626.6	535.5	197.2	306.9	26,641.7
June	10,673.3	7,671.9	4,284.6	2,062.2	2,652.6	556.8	216.9	318.1	28,436.4
September	10,400.0	8,052.9	4,215.3	2,075.0	2,774.9	569.6	245.5	345.9	28,679.0
December	11,018.6	8,444.9	4,564.0	2,077.9	2,741.2	564.9	256.4	377.1	30,045.0
PUBLIC									
1990-91	16,633.1	13,386.1	7,185.0	4,486.4	4,607.5	1,399.6	683.2	2,460.6	50,841.4
1991-92	17,313.9	13,971.1	7,822.1	4,599.1	4,942.1	1,474.5	668.4	2,611.3	53,402.5
1992-93	17,613.4	14,322.4	8,453.9	4,592.5	4,994.2	1,454.0	709.2	2,621.9	54,761.5
1993-94	18,116.7	13,445.9	8,750.7	4,854.4	5,259.2	1,477.7	760.9	2,992.9	55,658.5
1992—									
June	4,281.2	3,420.6	1,952.7	1,123.3	1,194.8	349.3	154.0	583.8	13,059.7
September	4,372.3	3,465.4	2,006.1	1,196.7	1,278.4	376.6	177.8	670.4	13,543.6
December	4,577.6	3,766.0	2,290.4	1,144.9	1,319.5	372.3	180.5	684.6	14,335.8
1993—									
March	4,127.9	3,466.2	1,999.9	1,107.9	1,169.9	332.6	158.4	614.8	12,977.6
June	4,535.6	3,624.9	2,157.5	1,143.1	1,226.4	372.4	192.6	652.1	13,904.6
September	4,471.5	3,407.1	2,119.0	1,236.4	1,323.0	360.1	186.0	761.0	13,864.1
December	4,590.1	3,394.5	2,309.6	1,213.3	1,367.1	376.1	200.9	782.1	14,233.6
1994—									
March	4,314.6	3,104.5	2,052.9	1,143.1	1,232.5	325.5	169.0	648.9	12,990.8
June	4,663.2	3,418.4	2,252.7	1,271.2	1,331.4	374.2	207.4	787.0	14,305.4
September	4,478.3	3,081.3	2,211.3	1,199.1	1,187.7	330.5	178.7	674.3	13,341.3
December	4,781.7	3,255.0	2,203.4	1,168.4	1,395.1	379.1	213.3	787.5	14,183.5
PRIVATE AND PUBLIC									
1990-91	56,615.5	43,509.4	21,774.8	12,642.5	13,305.9	3,597.4	1,648.1	3,680.2	156,773.7
1991-92	56,827.3	42,585.5	22,847.3	12,472.8	14,102.5	3,763.7	1,547.9	3,989.1	158,136.1
1992-93	57,661.4	43,556.2	24,853.7	12,504.5	15,306.1	3,783.0	1,541.6	3,982.2	163,188.8
1993-94	59,017.8	42,520.9	25,129.9	13,174.3	16,110.2	3,739.0	1,590.8	4,283.8	165,566.7
1992—									
June	14,303.7	10,656.2	5,816.3	3,063.5	3,609.9	915.9	348.1	960.3	39,673.8
September	14,351.5	10,779.3	6,018.6	3,129.1	3,792.6	953.6	388.1	1,037.8	40,450.7
December	14,909.2	11,328.2	6,555.1	3,210.9	3,896.7	962.3	392.8	1,022.4	42,277.7
1993—									
March	13,954.4	10,581.3	5,914.7	3,020.7	3,664.0	897.2	349.3	927.5	39,309.1
June	14,446.3	10,867.4	6,365.3	3,143.7	3,952.7	970.0	411.3	994.5	41,151.3
September	14,417.7	10,602.1	6,079.4	3,330.7	4,087.9	938.5	400.3	1,091.8	40,948.5
December	15,089.0	10,647.5	6,507.9	3,380.5	4,120.5	973.9	403.9	1,134.3	42,257.5
1994—									
March	14,244.1	10,080.6	6,035.0	3,230.7	3,859.1	861.1	366.2	955.8	39,632.5
June	15,336.5	11,090.2	6,537.3	3,333.4	3,984.0	931.0	424.3	1,105.1	42,741.9
September	14,878.2	11,134.2	6,426.7	3,274.1	3,962.6	900.1	424.1	1,020.2	42,020.3
December	15,800.3	11,699.9	6,767.4	3,246.3	4,136.3	944.0	469.7	1,164.6	44,228.5

TABLE 5. EMPLOYED WAGE AND SALARY EARNERS, STATES AND TERRITORIES, PERSONS — TREND

State, Territory/Sector	Number of employees ('000)				
	December 1993	September 1994	October 1994	November 1994	December 1994
New South Wales	1,969.6	2,007.0	2,018.9	2,031.1	2,044.2
Private	1,451.7	1,496.2	1,506.1	1,516.7	1,528.2
Public	517.9	510.9	512.8	514.4	516.0
Commonwealth	116.4	116.0	116.4	116.8	117.2
State	348.6	342.2	343.7	344.8	345.9
Local	53.0	52.7	52.7	52.8	52.9
Victoria	1,434.7	1,537.6	1,545.4	1,552.0	1,557.3
Private	1,053.8	1,168.4	1,177.7	1,186.0	1,193.0
Public	380.9	369.2	367.7	366.0	364.3
Commonwealth	89.2	83.8	84.4	85.2	86.1
State	246.3	240.6	239.0	237.1	235.1
Local	45.3	44.8	44.3	43.7	43.0
Queensland	958.2	943.8	952.8	963.4	975.4
Private	683.3	676.4	683.9	692.9	703.3
Public	275.0	267.4	268.9	270.5	272.1
Commonwealth	45.5	44.5	45.2	46.0	46.7
State	196.2	189.7	190.6	191.7	192.8
Local	33.3	33.2	33.0	32.8	32.6
South Australia	477.3	471.8	473.0	474.0	474.7
Private	338.2	339.1	340.6	341.7	342.4
Public	139.0	132.6	132.4	132.3	132.3
Commonwealth	25.3	24.7	24.8	25.0	25.1
State	104.6	99.1	98.7	98.5	98.3
Local	9.1	8.8	8.8	8.8	8.9
Western Australia	548.1	551.6	553.6	554.8	555.2
Private	392.2	397.7	397.9	397.5	396.5
Public	155.9	153.9	155.6	157.3	158.7
Commonwealth	22.8	21.8	21.8	21.8	21.9
State	120.4	119.0	120.9	122.8	124.3
Local	12.7	13.1	12.9	12.7	12.5
Tasmania	144.1	138.3	137.8	137.3	136.9
Private	98.2	94.0	93.3	92.5	91.8
Public	45.9	44.3	44.5	44.8	45.0
State	34.0	32.8	33.0	33.3	33.5
Northern Territory	54.4	58.8	59.5	60.1	60.8
Private	33.9	38.1	38.6	39.1	39.6
Public	20.5	20.7	20.9	21.0	21.2
Australian Capital Territory	133.8	132.3	133.3	134.3	135.3
Private	59.9	59.3	60.0	60.5	60.9
Public	73.9	72.9	73.3	73.8	74.4
Australia	5,720.1	5,840.5	5,873.7	5,907.0	5,940.8
Private	4,111.2	4,269.3	4,298.2	4,326.9	4,355.7
Public	1,608.9	1,571.2	1,575.5	1,580.1	1,585.1
Commonwealth	365.1	354.8	357.1	359.8	362.8
State	1,084.9	1,058.7	1,061.5	1,064.2	1,067.1
Local	158.9	157.7	156.9	156.1	155.2

TABLE 6. EMPLOYED WAGE AND SALARY EARNERS, STATES AND TERRITORIES, PERSONS — SEASONALLY ADJUSTED

State, Territory/Sector	Number of employees ('000)				
	December 1993	September 1994	October 1994	November 1994	December 1994
New South Wales	1,980.7	1,988.9	2,033.3	2,032.6	2,048.7
Private	1,455.6	1,480.9	1,516.6	1,519.9	1,532.4
Public	525.0	508.0	516.7	512.7	516.4
Commonwealth	116.3	115.9	116.5	116.0	117.8
State	356.1	339.6	347.2	344.0	345.5
Local	52.7	52.5	52.9	52.7	53.1
Victoria	1,431.7	1,535.6	1,544.5	1,543.2	1,554.1
Private	1,049.2	1,163.1	1,178.4	1,179.4	1,189.4
Public	382.5	372.5	366.1	363.8	364.7
Commonwealth	90.3	82.0	86.2	85.7	87.2
State	246.8	245.5	236.1	234.7	234.6
Local	45.4	45.0	43.8	43.5	43.0
Queensland	961.5	927.8	960.8	971.2	986.8
Private	683.0	660.9	692.5	699.6	712.2
Public	278.5	266.9	268.2	271.6	274.6
Commonwealth	45.5	43.7	45.6	46.0	47.7
State	199.6	189.9	189.8	192.8	194.2
Local	33.3	33.3	32.8	32.8	32.7
South Australia	468.7	475.6	472.0	474.0	472.6
Private	329.0	343.4	339.8	340.9	340.0
Public	139.8	132.2	132.2	133.1	132.6
Commonwealth	25.5	24.4	25.1	24.9	25.3
State	105.1	98.9	98.2	99.4	98.4
Local	9.1	8.8	8.9	8.8	8.9
Western Australia	547.9	552.7	552.4	550.9	555.8
Private	390.5	401.1	394.5	393.1	395.4
Public	157.4	151.6	157.9	157.8	160.4
Commonwealth	22.8	21.9	21.7	21.7	22.1
State	122.1	116.4	123.7	123.4	125.7
Local	12.5	13.4	12.5	12.7	12.5
Tasmania	146.8	139.5	137.0	137.4	137.1
Private	100.1	94.7	92.1	92.1	92.3
Public	46.7	44.8	44.9	45.2	44.8
State	34.5	33.2	33.4	33.8	33.1
Northern Territory	53.6	58.3	59.8	59.9	61.2
Private	33.2	37.7	38.9	38.8	39.9
Public	20.4	20.6	20.9	21.2	21.3
Australian Capital Territory	136.1	132.7	133.2	133.4	136.3
Private	61.5	59.9	60.0	60.3	60.3
Public	74.6	72.8	73.2	73.1	75.9
Australia	5,727.2	5,809.8	5,892.1	5,903.2	5,952.9
Private	4,102.1	4,241.7	4,312.9	4,324.0	4,361.9
Public	1,625.1	1,568.1	1,579.2	1,579.3	1,591.0
Commonwealth	367.0	351.2	359.1	359.7	367.5
State	1,099.4	1,058.9	1,063.9	1,063.8	1,068.2
Local	158.7	158.0	156.2	155.8	155.3

TABLE 7. EMPLOYED WAGE AND SALARY EARNERS, STATES AND TERRITORIES

State, Territory/Sector	Number of employees ('000)						Gross earnings	
	December 1993	September 1994	October 1994	November 1994		December 1994	December Quarter 1994	
	Persons	Persons	Persons	Males	Females	Persons	Persons	\$m
New South Wales	2,001.7	1,994.0	2,040.3	1,103.9	951.6	2,055.5	2,071.0	15,800.3
Private	1,477.4	1,481.0	1,525.4	831.4	706.8	1,538.2	1,555.2	11,018.6
Public	524.4	513.0	514.9	272.5	244.8	517.3	515.9	4,781.7
Commonwealth	116.7	115.2	115.8	68.9	47.1	116.0	118.2	1,236.9
State	354.7	345.2	346.2	165.4	182.8	348.2	344.2	3,123.7
Local	53.0	52.6	53.0	38.2	14.9	53.1	53.4	421.0
Victoria	1,445.1	1,545.8	1,546.5	824.2	732.8	1,557.0	1,568.3	11,699.9
Private	1,058.4	1,168.0	1,178.8	643.9	544.4	1,188.3	1,199.5	8,444.9
Public	386.7	377.8	367.7	180.3	188.4	368.7	368.8	3,255.0
Commonwealth	90.3	81.6	85.6	50.5	34.9	85.4	87.2	896.1
State	250.4	251.1	238.4	109.2	130.5	239.7	238.1	2,088.7
Local	46.0	45.1	43.7	20.6	23.0	43.7	43.5	270.3
Queensland	967.1	925.6	974.3	543.0	443.5	986.5	992.7	6,767.4
Private	689.6	658.3	704.4	395.7	317.1	712.8	719.1	4,564.0
Public	277.4	267.2	269.9	147.2	126.4	273.7	273.6	2,203.4
Commonwealth	45.3	43.5	45.6	26.3	19.5	45.8	47.5	439.1
State	198.8	190.6	191.7	95.4	99.8	195.3	193.4	1,521.5
Local	33.3	33.1	32.7	25.5	7.1	32.7	32.7	242.7
South Australia	468.7	474.1	470.1	246.8	228.3	475.0	472.5	3,246.3
Private	328.0	340.7	337.4	180.4	161.0	341.3	339.1	2,077.9
Public	140.6	133.4	132.7	66.4	67.3	133.7	133.4	1,168.4
Commonwealth	25.4	24.4	24.8	15.9	8.9	24.7	25.2	248.4
State	106.1	100.2	99.1	44.5	55.6	100.1	99.3	858.4
Local	9.1	8.8	8.9	6.1	2.8	8.9	8.9	61.6
Western Australia	551.0	552.2	551.6	286.2	267.9	554.0	558.8	4,136.3
Private	393.9	398.9	393.3	206.9	187.5	394.4	398.8	2,741.2
Public	157.1	153.2	158.3	79.3	80.4	159.6	160.1	1,395.1
Commonwealth	22.8	21.5	21.6	12.8	8.8	21.7	22.1	209.9
State	121.6	118.5	124.2	58.5	66.8	125.2	125.3	1,097.7
Local	12.7	13.3	12.5	8.0	4.8	12.8	12.7	87.5
Tasmania	147.9	139.2	136.7	71.3	66.5	137.8	138.0	944.0
Private	100.7	94.4	91.4	48.6	43.2	91.8	92.8	564.9
Public	47.2	44.8	45.4	22.7	23.3	46.0	45.2	379.1
Commonwealth	7.6	7.5	7.6	4.8	2.8	7.5	7.7	75.4
State	34.9	33.3	33.9	15.2	19.4	34.6	33.6	276.5
Local	4.6	3.9	3.9	2.7	1.1	3.8	3.9	27.2
Northern Territory	53.4	60.2	61.1	32.4	28.9	61.3	60.9	469.7
Private	32.9	39.5	40.1	22.1	17.9	40.0	39.5	256.4
Public	20.5	20.7	21.0	10.3	11.0	21.3	21.4	213.3
Commonwealth	4.1	3.6	3.8	2.4	1.7	4.0	4.1	39.3
State	15.2	15.7	15.9	7.1	8.8	15.9	16.0	166.4
Local	1.2	1.4	1.3	0.8	0.5	1.3	1.3	7.6
Australian Capital Territory	136.6	132.5	133.6	67.6	66.0	133.6	136.8	1,164.6
Private	62.4	59.8	60.8	28.8	31.7	60.6	61.2	377.1
Public	74.3	72.7	72.8	38.7	34.3	73.0	75.6	787.5
Commonwealth	54.3	52.9	53.3	30.1	23.2	53.3	55.0	605.0
State	20.0	19.8	19.5	8.6	11.1	19.7	20.6	182.5
Australia	5,771.4	5,823.5	5,914.3	3,175.4	2,785.3	5,960.8	5,999.1	44,228.5
Private	4,143.3	4,240.7	4,331.5	2,358.0	2,009.5	4,367.5	4,405.2	30,045.0
Public	1,628.1	1,582.8	1,582.8	817.5	775.8	1,593.3	1,593.9	14,183.5
Commonwealth	366.5	350.4	357.9	211.6	146.8	358.4	367.0	3,750.2
State	1,101.7	1,074.3	1,068.9	504.0	574.7	1,078.7	1,070.6	9,315.4
Local	159.8	158.1	156.0	101.9	54.2	156.1	156.4	1,117.9



TABLE 8. EMPLOYED WAGE AND SALARY EARNERS, STATES AND TERRITORIES, PUBLIC INSTITUTIONAL SECTOR

State, Territory/Sector	Public Trading Enterprises		Financial Enterprises		General Government		Total Public	
	November 1994	December Quarter 1994	November 1994	December Quarter 1994	November 1994	December Quarter 1994	November 1994	December Quarter 1994
	Persons ('000)	Gross Earnings (\$m)	Persons ('000)	Gross Earnings (\$m)	Persons ('000)	Gross Earnings (\$m)	Persons ('000)	Gross Earnings (\$m)
New South Wales								
Total Public	108.5	1,231.8	23.4	205.7	385.3	3,344.1	517.3	4,781.7
Commonwealth	54.8	652.7	17.6	151.0	43.7	433.2	116.0	1,236.9
State	46.7	521.0	5.9	54.7	295.6	2,548.0	348.2	3,123.7
Local	7.0	58.0	—	—	46.0	363.0	53.1	421.0
Victoria								
Total Public	71.8	837.2	16.6	126.1	280.3	2,291.7	368.7	3,255.0
Commonwealth	41.3	492.1	13.2	92.1	30.9	311.8	85.4	896.1
State	29.8	334.5	3.4	34.0	206.6	1,720.2	239.7	2,088.7
Local	0.8	10.6	—	—	42.9	259.7	43.7	270.3
Queensland								
Total Public	36.0	348.6	6.8	54.6	230.8	1,800.2	273.7	2,203.4
Commonwealth	19.8	205.2	5.6	40.2	20.4	193.7	45.8	439.1
State	11.1	101.8	1.3	14.4	182.9	1,405.3	195.3	1,521.5
Local	5.2	41.6	—	—	27.5	201.1	32.7	242.7
South Australia								
Total Public	21.1	211.2	6.3	54.8	106.3	902.4	133.7	1,168.4
Commonwealth	11.2	118.5	2.2	15.3	11.3	114.6	24.7	248.4
State	9.8	92.2	4.1	39.5	86.2	726.7	100.1	858.4
Local	0.1	0.5	—	—	8.8	61.1	8.9	61.6
Western Australia								
Total Public	25.5	264.3	3.0	21.7	131.1	1,109.1	159.6	1,395.1
Commonwealth	9.2	96.2	2.7	18.7	9.8	95.0	21.7	209.9
State	16.3	168.1	0.3	3.1	108.6	926.5	125.2	1,097.7
Local	—	—	—	—	12.8	87.5	12.8	87.5
Tasmania								
Total Public	5.5	57.2	0.7	5.0	39.8	316.8	46.0	379.1
Commonwealth	2.7	29.7	0.6	4.7	4.2	41.0	7.5	75.4
State	2.5	25.0	—	0.3	32.1	251.2	34.6	276.5
Local	0.3	2.5	—	—	3.5	24.7	3.8	27.2
Northern Territory								
Total Public	1.1	10.5	0.2	1.7	19.9	201.1	21.3	213.3
Commonwealth	1.1	10.5	0.2	1.3	2.7	27.5	4.0	39.3
State	—	—	—	0.4	15.9	166.1	15.9	166.4
Local	—	—	—	—	1.3	7.6	1.3	7.6
Australian Capital Territory								
Total Public	5.5	58.5	1.2	12.5	66.2	716.5	73.0	787.5
Commonwealth	3.1	33.7	1.1	11.8	49.1	559.5	53.3	605.0
State	2.4	24.8	0.1	0.7	17.1	157.0	19.7	182.5
Australia								
Total Public	275.2	3,019.4	58.2	482.2	1,259.8	10,681.9	1,593.3	14,183.5
Commonwealth	143.1	1,638.7	43.2	335.1	172.1	1,776.3	358.4	3,750.2
State	118.7	1,267.3	15.1	147.1	944.9	7,901.0	1,078.7	9,315.4
Local	13.4	113.3	—	—	142.8	1,004.6	156.1	1,117.9

**TABLE 9. EMPLOYED WAGE AND SALARY EARNERS, AUSTRALIA,  
PUBLIC INSTITUTIONAL SECTOR, NOVEMBER 1994  
PERSONS ('000)**

<i>Industry</i>	<i>Public Trading Enterprises</i>	<i>Financial Enterprises</i>	<i>General Government</i>	<i>Total Public</i>
Agriculture, forestry, fishing and hunting	0.4	—	4.5	4.9
Mining	0.8	—	—	0.8
Manufacturing	11.2	0.3	3.7	15.1
Electricity, gas and water	66.5	—	8.6	75.1
Construction	0.1	3.4	25.0	28.5
Wholesale trade	1.0	—	0.8	1.8
Retail trade	0.1	—	0.1	0.2
Transport and storage	75.7	—	21.7	97.4
Communication	105.1	—	0.2	105.2
Finance, property and business services	5.2	53.7	19.2	78.1
Public administration and defence(a)	1.0	0.9	325.6	327.5
Community services	1.6	—	836.1	837.6
Recreation, personal and other services	6.5	—	14.4	21.0
<b>Total all industries</b>	<b>275.2</b>	<b>58.2</b>	<b>1,259.8</b>	<b>1,593.3</b>

(a) Excludes members of permanent defence forces and employees of overseas embassies, consulates etc.

**TABLE 10. EMPLOYED WAGE AND SALARY EARNERS, AUSTRALIA,  
PUBLIC INSTITUTIONAL SECTOR, DECEMBER QUARTER 1994  
GROSS EARNINGS (\$m)**

<i>Industry</i>	<i>Public Trading Enterprises</i>	<i>Financial Enterprises</i>	<i>General Government</i>	<i>Total Public</i>
Agriculture, forestry, fishing and hunting	3.2	—	40.2	43.4
Mining	10.4	—	—	10.4
Manufacturing	108.1	2.5	34.6	145.2
Electricity, gas and water	718.4	—	87.7	806.1
Construction	1.5	34.0	238.5	273.9
Wholesale trade	10.2	—	5.8	16.0
Retail trade	0.6	—	0.5	1.1
Transport and storage	889.9	—	240.0	1,129.9
Communication	1,162.1	—	1.1	1,163.2
Finance, property and business services	51.6	435.1	180.7	667.5
Public administration and defence(a)	8.9	10.5	2,785.8	2,805.2
Community services	15.9	—	6,920.5	6,936.5
Recreation, personal and other services	38.7	—	146.5	185.2
<b>Total all industries</b>	<b>3,019.4</b>	<b>482.2</b>	<b>10,681.9</b>	<b>14,183.5</b>

(a) Excludes members of permanent defence forces and employees of overseas embassies, consulates etc.

TABLE 11. EMPLOYED WAGE AND SALARY EARNERS — FULL-TIME AND PART-TIME(a) — NOVEMBER 1994

	Number of employees ('000)					
	Full-time			Part-time		
	Males	Females	Persons	Males	Females	Persons
AUSTRALIA BY INDUSTRY						
Mining	55.9	5.6	61.5	0.7	0.6	1.3
Manufacturing	621.3	184.7	806.1	42.7	61.8	104.5
Electricity, gas and water	66.4	8.7	75.1	1.0	1.8	2.7
Construction	200.7	30.7	231.4	19.5	12.1	31.6
Wholesale trade	233.9	83.9	317.8	23.7	41.4	65.1
Retail trade	240.7	160.4	401.1	134.2	292.8	427.0
Transport and storage	183.8	51.2	235.1	27.6	14.8	42.4
Communication	74.3	27.4	101.7	1.7	7.4	9.1
Finance, property and business services	313.9	258.8	572.7	50.6	147.4	198.0
Public administration and defence(b)	178.7	96.3	275.0	12.1	40.5	52.5
Community services	372.5	491.8	864.2	103.9	483.3	587.2
Recreation, personal and other services(c)	117.2	95.9	213.1	94.8	184.9	279.6
<b>Total all industries(d)</b>	<b>2,662.9</b>	<b>1,496.3</b>	<b>4,159.2</b>	<b>512.5</b>	<b>1,289.0</b>	<b>1,801.5</b>
<i>Private</i>	<i>1,918.5</i>	<i>991.6</i>	<i>2,910.1</i>	<i>439.4</i>	<i>1,018.0</i>	<i>1,457.4</i>
<i>Public</i>	<i>744.4</i>	<i>504.7</i>	<i>1,249.1</i>	<i>73.1</i>	<i>271.1</i>	<i>344.1</i>
STATES AND TERRITORIES						
New South Wales	926.3	544.6	1,470.8	177.7	407.0	584.7
Victoria	694.8	388.1	1,082.9	129.5	344.7	474.1
Queensland	455.5	228.2	683.7	87.5	215.3	302.9
South Australia	197.2	104.9	302.1	49.5	123.4	172.9
Western Australia	245.4	140.9	386.4	40.7	126.9	167.7
Tasmania	59.7	30.8	90.6	11.6	35.6	47.2
Northern Territory	27.0	19.0	46.0	5.4	9.9	15.3
Australian Capital Territory	57.0	39.8	96.8	10.5	26.2	36.7

(a) See Explanatory Notes, paragraph 26. (b) Excludes members of permanent defence forces and employees of overseas embassies, consulates etc. (c) Excludes private households employing staff. (d) Includes employees of government agencies classified to Agriculture, forestry, fishing and hunting.

TABLE 12. EMPLOYED WAGE AND SALARY EARNERS, AUSTRALIA, PERSONS — TREND

Industry	Number of employees ( <sup>'000</sup> )				
	December 1993	September 1994	October 1994	November 1994	December 1994
Mining	62.9	62.5	62.7	62.9	63.0
Manufacturing	884.2	891.2	898.7	905.3	911.3
Construction	247.1	256.4	260.1	263.7	267.2
Wholesale trade	399.5	378.8	376.3	375.0	374.8
Retail trade	787.8	806.7	810.7	815.2	820.4
Transport and storage	268.2	273.7	274.6	275.5	276.1
Communication	105.7	109.0	110.2	111.5	112.7
Finance, property and business services	725.2	755.3	761.9	768.3	774.3
Public administration and defence(a)	326.0	335.1	333.5	331.7	329.8
Community services	1,377.8	1,422.6	1,429.9	1,436.7	1,443.4
Recreation, personal and other services	446.6	470.1	477.2	483.9	490.6
<b>Total all industries(b)(c)</b>	<b>5,720.1</b>	<b>5,840.5</b>	<b>5,873.7</b>	<b>5,907.0</b>	<b>5,940.8</b>

(a) Excludes members of permanent defence forces and employees of overseas embassies, consulates, etc. (b) Includes employees of government agencies classified to Agriculture, forestry, fishing and hunting. (c) Derived indirectly by the addition of trend data for the private and public sectors, not by the summation of the component industries because not all industries are trend adjusted.

TABLE 13. EMPLOYED WAGE AND SALARY EARNERS, AUSTRALIA, PERSONS — SEASONALLY ADJUSTED

Industry	Number of employees ( <sup>'000</sup> )				
	December 1993	September 1994	October 1994	November 1994	December 1994
Mining	61.3	62.4	62.9	62.7	62.9
Manufacturing	893.4	888.4	899.7	905.0	906.7
Construction	257.3	252.1	263.2	264.2	266.7
Wholesale trade	395.4	377.0	376.0	376.5	382.6
Retail trade	781.5	801.1	813.2	815.6	825.5
Transport and storage	270.4	275.7	273.9	274.2	276.2
Communication	106.4	108.3	110.1	111.4	113.2
Finance, property and business services	719.5	747.6	772.7	770.2	768.5
Public administration and defence(a)	325.4	339.4	327.1	326.1	332.9
Community services	1,373.0	1,421.8	1,432.1	1,431.4	1,445.9
Recreation, personal and other services	450.8	461.1	491.2	478.8	489.3
<b>Total all industries(b)(c)</b>	<b>5,727.2</b>	<b>5,809.8</b>	<b>5,892.1</b>	<b>5,903.2</b>	<b>5,952.9</b>

(a) Excludes members of permanent defence forces and employees of overseas embassies, consulates, etc. (b) Includes employees of government agencies classified to Agriculture, forestry, fishing and hunting. (c) Derived indirectly by the addition of seasonally adjusted private and public sector estimates, not by the summation of the component industries because not all industries are seasonally adjusted.

TABLE 14. EMPLOYED WAGE AND SALARY EARNERS, AUSTRALIA — SECTOR AND INDUSTRY

Industry	Number of employees ( '000)						Gross earnings	
	December 1993	September 1994	October 1994	November 1994		December 1994	December Quarter 1994	
	Persons	Persons	Persons	Males	Females	Persons	Persons	
PRIVATE								
Mining	58.2	61.3	62.1	55.8	6.2	62.0	62.9	920.7
Manufacturing	879.1	872.6	888.1	651.1	244.3	895.5	892.0	7,544.8
Electricity, gas and water	2.7	2.8	2.7	2.1	0.6	2.7	2.8	28.8
Construction	214.5	221.7	232.4	197.4	37.1	234.5	234.7	1,846.6
Wholesale trade	399.0	376.2	379.1	256.4	124.6	381.1	385.8	3,048.6
Retail trade	805.4	795.7	812.9	374.9	453.0	827.9	850.8	3,694.2
Transport and storage	168.6	179.3	178.0	128.3	51.8	180.0	182.2	1,506.2
Finance, property and business services	624.4	670.8	690.2	330.9	361.7	692.6	692.3	5,631.1
Community services	552.2	613.5	605.5	157.0	456.8	613.8	617.5	3,610.5
Recreation, personal and other services(a)	437.9	441.7	474.9	201.0	270.7	471.7	478.4	2,159.8
Total all industries(b)	4,143.3	4,240.7	4,331.5	2,358.0	2,009.5	4,367.5	4,405.2	30,045.0
COMMONWEALTH GOVERNMENT								
Manufacturing	8.9	6.0	9.8	8.3	1.6	9.9	9.9	100.6
Electricity, gas and water	0.7	0.7	0.7	0.5	0.1	0.7	0.7	6.5
Construction	*5.1	*4.8	*4.0	*3.6	*0.4	*4.0	*4.0	*44.0
Wholesale trade	0.6	0.6	0.6	0.4	0.2	0.6	0.6	6.3
Retail trade	—	—	—	—	—	—	—	—
Transport and storage	30.5	25.3	31.7	23.3	8.6	31.8	31.8	434.5
Communication	104.7	102.8	104.5	73.0	32.1	105.1	107.0	1,162.1
Finance, property and business services	52.4	46.9	46.8	18.3	28.4	46.7	46.5	375.4
Public administration and defence(c)	105.6	108.0	105.4	54.2	51.1	105.3	110.5	1,042.0
Community services	49.7	48.7	47.3	26.1	21.3	47.3	48.9	490.7
Recreation, personal and other services(a)	8.3	6.6	7.1	4.1	3.1	7.2	7.2	88.1
Total all industries(d)	366.5	350.4	357.9	211.6	146.8	358.4	367.0	3,750.2

(a) Excludes private households employing staff. (b) Includes employees of enterprises classified to Communication. (c) Excludes members of permanent defence forces and employees of overseas embassies, consulates etc. (d) Includes employees of government agencies classified to Agriculture, forestry, fishing and hunting.

TABLE 14. EMPLOYED WAGE AND SALARY EARNERS, AUSTRALIA — SECTOR AND INDUSTRY—continued

Industry	Number of employees ('000)						Gross earnings	
	December 1993	September 1994	October 1994	November 1994		December 1994	December Quarter 1994	
	Persons	Persons	Persons	Males	Females	Persons	Persons	
STATE GOVERNMENT								
Agriculture, forestry, fishing and hunting	4.6	4.8	4.8	3.7	1.1	4.8	4.9	42.8
Mining	3.8	0.8	0.8	0.7	0.1	0.8	0.8	10.4
Manufacturing	5.0	4.0	4.4	3.9	0.5	4.4	4.4	38.6
Electricity, gas and water	70.0	62.1	61.0	52.5	8.2	60.8	61.0	677.5
Construction	28.3	23.3	23.1	18.0	5.0	23.0	23.0	218.4
Wholesale trade	0.7	0.9	0.8	0.5	0.3	0.8	0.8	7.1
Retail trade	0.3	0.2	0.2	0.1	0.1	0.2	0.2	1.1
Transport and storage	72.8	64.7	64.1	58.4	5.6	63.9	63.8	681.5
Finance, property and business services	44.3	28.1	31.3	15.2	16.1	31.3	31.3	291.1
Public administration and defence(c)	89.6	93.2	84.9	51.3	34.8	86.1	89.7	812.3
Community services	768.2	778.2	779.6	292.8	496.1	788.9	776.8	6,438.4
Recreation, personal and other services	14.0	14.0	13.7	6.7	6.9	13.5	13.8	95.1
<b>Total all industries(b)</b>	<b>1,101.7</b>	<b>1,074.3</b>	<b>1,068.9</b>	<b>504.0</b>	<b>574.7</b>	<b>1,078.7</b>	<b>1,070.6</b>	<b>9,315.4</b>
LOCAL GOVERNMENT								
Electricity, gas and water	15.5	14.1	13.7	12.2	1.4	13.7	13.6	122.1
Public administration and defence(c)	133.7	136.4	136.0	85.3	50.9	136.2	136.4	950.9
Other industries	10.6	7.6	6.3	4.4	1.9	6.3	6.3	44.9
<b>Total all industries</b>	<b>159.8</b>	<b>158.1</b>	<b>156.0</b>	<b>101.9</b>	<b>54.2</b>	<b>156.1</b>	<b>156.4</b>	<b>1,117.9</b>
TOTAL PUBLIC								
Agriculture, forestry, fishing and hunting	4.7	4.9	4.8	3.8	1.1	4.9	5.0	43.4
Mining	3.8	0.8	0.8	0.7	0.1	0.8	0.8	10.4
Manufacturing	14.6	10.9	15.2	12.9	2.2	15.1	15.1	145.2
Electricity, gas and water	86.2	76.8	75.4	65.3	9.8	75.1	75.3	806.1
Construction	39.4	29.6	28.6	22.7	5.7	28.5	28.5	273.9
Wholesale trade	1.7	1.8	1.8	1.1	0.7	1.8	1.8	16.0
Retail trade	0.3	0.2	0.2	0.1	0.1	0.2	0.2	1.1
Transport and storage	105.0	92.0	97.4	83.1	14.3	97.4	97.2	1,129.9
Communication	104.8	103.0	104.7	73.1	32.1	105.2	107.1	1,163.2
Finance, property and business services	96.9	75.1	78.2	33.6	44.5	78.1	78.0	667.5
Public administration and defence(c)	328.9	337.6	326.3	190.8	136.7	327.5	336.6	2,805.2
Community services	819.1	829.2	828.4	319.3	518.3	837.6	827.1	6,936.5
Recreation, personal and other services	22.6	20.9	21.0	10.9	10.0	21.0	21.3	185.2
<b>Total all industries</b>	<b>1,628.1</b>	<b>1,582.8</b>	<b>1,582.8</b>	<b>817.5</b>	<b>775.8</b>	<b>1,593.3</b>	<b>1,593.9</b>	<b>14,183.5</b>

(a) Excludes private households employing staff. (b) Includes employees of enterprises classified to Communication. (c) Excludes members of permanent defence forces and employees of overseas embassies, consulates etc. (d) Includes employees of government agencies classified to Agriculture, forestry, fishing and hunting.

TABLE 14. EMPLOYED WAGE AND SALARY EARNERS, AUSTRALIA — SECTOR AND INDUSTRY—continued

Industry	Number of employees ( '000)						Gross earnings	
	December 1993	September 1994	October 1994	November 1994		December 1994	December Quarter 1994	
	Persons	Persons	Persons	Males	Females	Persons	Persons	
								\$m
PRIVATE AND PUBLIC								
Mining	62.1	62.1	62.9	56.6	6.3	62.8	63.7	931.1
Manufacturing	893.7	883.4	903.3	664.1	246.5	910.6	907.1	7,689.9
Electricity, gas and water	88.9	79.7	78.1	67.4	10.4	77.8	78.0	834.9
Construction	253.9	251.3	261.1	220.2	42.8	263.0	263.2	2,120.6
Wholesale trade	400.8	378.0	380.8	257.5	125.3	382.9	387.6	3,064.6
Retail trade	805.7	795.9	813.1	374.9	453.2	828.1	851.0	3,695.3
Transport and storage	273.6	271.3	275.5	211.4	66.1	277.4	279.4	2,636.1
Communication	106.2	108.0	110.1	76.0	34.8	110.8	112.9	1,217.0
Finance, property and business services	721.2	746.0	768.4	364.5	406.2	770.7	770.3	6,298.6
Public administration and defence(c)	328.9	337.6	326.3	190.8	136.7	327.5	336.6	2,805.2
Community services	1,371.3	1,442.7	1,433.9	476.3	975.1	1,451.4	1,444.6	10,546.9
Recreation, personal and other services(a)	460.5	462.6	496.0	211.9	280.8	492.7	499.7	2,345.0
<b>Total all industries(d)</b>	<b>5,771.4</b>	<b>5,823.5</b>	<b>5,914.3</b>	<b>3,175.4</b>	<b>2,785.3</b>	<b>5,960.8</b>	<b>5,999.1</b>	<b>44,228.5</b>

(a) Excludes private households employing staff. (b) Includes employees of enterprises classified to Communication. (c) Excludes members of permanent defence forces and employees of overseas embassies, consulates etc. (d) Includes employees of government agencies classified to Agriculture, forestry, fishing and hunting.

TABLE 15. EMPLOYED WAGE AND SALARY EARNERS, NEW SOUTH WALES — SECTOR AND INDUSTRY

Industry	Number of employees ( '000)						Gross earnings	
	December 1993	September 1994	October 1994	November 1994		December 1994	December Quarter 1994	
	Persons	Persons	Persons	Males	Females	Persons	Persons	
PRIVATE								
Manufacturing	309.8	284.1	294.3	215.9	81.3	297.3	297.1	2,680.5
Electricity, gas and water; Construction	91.2	87.6	87.3	76.2	12.0	88.1	89.2	686.5
Wholesale trade	157.1	137.4	139.3	91.7	48.5	140.2	141.0	1,187.6
Retail trade	283.3	276.5	286.0	135.8	157.7	293.5	303.3	1,340.6
Transport and storage	58.3	57.6	62.1	42.1	19.9	62.0	63.9	515.9
Finance, property and business services	239.4	266.9	271.3	127.5	144.2	271.7	274.4	2,352.6
Community services	163.4	200.2	195.9	46.9	152.4	199.3	199.6	1,171.3
Recreation, personal and other services(a)	160.0	151.5	169.5	77.6	88.6	166.2	166.2	777.2
Total all industries(b)(e)	1,477.4	1,481.0	1,525.4	831.4	706.8	1,538.2	1,555.2	11,018.6
PUBLIC								
Manufacturing	4.4	3.8	4.4	3.5	0.8	4.4	4.3	44.6
Electricity, gas and water; Construction	42.2	41.0	40.4	33.7	6.5	40.2	40.1	425.5
Wholesale trade	0.5	0.5	0.5	0.3	0.2	0.5	0.5	4.0
Retail trade	—	—	—	—	—	—	—	0.2
Transport and storage	41.7	39.6	41.7	34.4	7.3	41.7	41.6	517.8
Communication	35.3	34.6	35.2	24.7	10.5	35.2	35.7	379.1
Finance, property and business services	44.0	30.3	30.3	13.3	17.1	30.4	30.2	273.3
Public administration and defence(c)	87.8	92.3	90.9	52.9	38.5	91.4	94.7	811.2
Community services	256.1	261.5	260.1	102.7	159.2	262.0	256.8	2,215.9
Recreation, personal and other services	8.3	7.5	9.6	5.4	4.1	9.5	10.0	92.7
Total all industries(d)(e)	524.4	513.0	514.9	272.5	244.8	517.3	515.9	4,781.7
PRIVATE AND PUBLIC								
Mining	16.4	16.1	16.7	16.1	*0.7	16.9	17.1	272.0
Manufacturing	314.2	287.9	298.6	219.4	82.2	301.6	301.4	2,725.1
Electricity, gas and water	32.9	31.2	30.9	26.3	4.5	30.8	30.7	334.0
Construction	100.4	97.4	96.7	83.5	14.0	97.5	98.6	778.1
Wholesale trade	157.6	137.9	139.8	91.9	48.7	140.6	141.4	1,191.6
Retail trade	283.3	276.6	286.0	135.8	157.7	293.5	303.3	1,340.8
Transport and storage	100.0	97.2	103.8	76.5	27.2	103.7	105.5	1,033.7
Communication	35.9	37.6	38.3	26.4	12.0	38.3	39.1	413.4
Finance, property and business services	283.4	297.2	301.6	140.8	161.3	302.1	304.6	2,625.9
Public administration and defence(c)	87.8	92.3	90.9	52.9	38.5	91.4	94.7	811.2
Community services	419.5	461.8	456.0	149.6	311.6	461.2	456.4	3,387.2
Recreation, personal and other services(a)	168.3	158.9	179.1	83.0	92.8	175.7	176.2	869.9
Total all industries(d)	2,001.7	1,994.0	2,040.3	1,103.9	951.6	2,055.5	2,071.0	15,800.3

(a) Excludes private households employing staff. (b) Includes employees of private enterprises classified to communication. (c) Excludes members of permanent defence forces and employees of overseas embassies, consulates etc. (d) Includes employees of government agencies classified to Agriculture, forestry, fishing and hunting. (e) Includes employees classified to Mining.



TABLE 16. EMPLOYED WAGE AND SALARY EARNERS, VICTORIA — SECTOR AND INDUSTRY

Industry	Number of employees ( '000)						Gross earnings	
	December 1993	September 1994	October 1994	November 1994		December 1994	December Quarter 1994	
	Persons	Persons	Persons	Males	Females	Persons	Persons	
PRIVATE								
Mining	2.0	*2.6	2.4	2.2	*0.3	2.5	2.6	22.5
Manufacturing	272.6	288.0	290.4	206.5	86.6	293.0	292.9	2,477.0
Electricity, gas and water; Construction	39.6	51.5	54.4	44.0	10.7	54.7	53.7	446.7
Wholesale trade	96.7	106.8	107.9	71.2	37.3	108.5	111.1	858.7
Retail trade	186.0	202.9	199.6	92.2	111.0	203.1	209.6	924.9
Transport and storage	50.1	57.5	56.5	41.7	*15.2	57.0	58.0	485.3
Finance, property and business services	167.7	196.5	202.4	100.0	102.4	202.5	203.5	1,737.0
Community services	155.0	159.4	157.1	40.7	119.5	160.2	159.4	976.1
Recreation, personal and other services(a)	88.5	101.6	106.6	44.7	60.5	105.2	107.3	503.8
<b>Total all industries(b)</b>	<b>1,058.4</b>	<b>1,168.0</b>	<b>1,178.8</b>	<b>643.9</b>	<b>544.4</b>	<b>1,188.3</b>	<b>1,199.5</b>	<b>8,444.9</b>
PUBLIC								
Agriculture, forestry, fishing and hunting	—	0.4	0.5	0.3	0.2	0.5	0.5	4.0
Mining	1.3	0.3	0.4	0.3	—	0.4	0.4	4.7
Manufacturing	*3.6	1.3	*4.5	*3.9	*0.6	*4.5	*4.4	*44.2
Electricity, gas and water; Construction	29.0	23.2	21.9	18.6	3.1	21.7	21.8	238.5
Wholesale trade	0.4	0.4	0.3	0.2	0.2	0.3	0.3	3.7
Retail trade	0.1	0.1	0.1	—	—	0.1	0.1	0.3
Transport and storage	21.9	15.7	18.2	15.5	2.7	18.2	18.2	220.8
Communication	32.4	30.9	31.5	21.3	10.3	31.5	31.8	375.8
Finance, property and business services	18.0	15.8	17.6	6.9	10.6	17.5	17.4	135.8
Public administration and defence(c)	82.1	83.1	72.6	37.6	34.9	72.5	74.2	551.7
Community services	192.4	201.3	197.4	74.3	124.6	198.8	197.0	1,648.7
Recreation, personal and other services	5.4	5.4	2.7	1.5	1.3	2.7	2.7	27.0
<b>Total all industries</b>	<b>386.7</b>	<b>377.8</b>	<b>367.7</b>	<b>180.3</b>	<b>188.4</b>	<b>368.7</b>	<b>368.8</b>	<b>3,255.0</b>
PRIVATE AND PUBLIC								
Mining	3.3	2.9	2.8	2.6	0.4	2.9	2.9	27.2
Manufacturing	276.2	289.3	294.8	210.4	87.1	297.5	297.3	2,521.1
Electricity, gas and water	21.4	18.5	17.7	15.3	2.2	17.5	17.6	194.6
Construction	47.3	56.1	58.6	47.3	11.5	58.9	57.9	490.5
Wholesale trade	97.1	107.1	108.3	71.4	37.5	108.9	111.4	862.3
Retail trade	186.1	203.0	199.6	92.2	111.0	203.2	209.6	925.1
Transport and storage	72.0	73.1	74.7	57.2	*17.9	75.2	76.1	706.1
Communication	32.6	32.2	*33.1	22.0	11.1	33.1	33.5	388.8
Finance, property and business services	185.7	212.3	220.0	106.9	113.1	220.0	220.9	1,872.8
Public administration and defence(c)	82.1	83.1	72.6	37.6	34.9	72.5	74.2	551.7
Community services	347.4	360.7	354.4	115.0	244.0	359.0	356.3	2,624.8
Recreation, personal and other services(a)	93.9	106.9	109.3	46.1	61.8	107.9	110.0	530.8
<b>Total all industries(d)</b>	<b>1,445.1</b>	<b>1,545.8</b>	<b>1,546.5</b>	<b>824.2</b>	<b>732.8</b>	<b>1,557.0</b>	<b>1,568.3</b>	<b>11,699.9</b>

(a) Excludes private households employing staff. (b) Includes employees of private enterprises classified to Communication. (c) Excludes members of permanent defence forces and employees of overseas embassies, consulates etc. (d) Includes employees of government agencies classified to Agriculture, forestry, fishing and hunting.

TABLE 17. EMPLOYED WAGE AND SALARY EARNERS, QUEENSLAND — SECTOR AND INDUSTRY

Industry	Number of employees ( <sup>'000</sup> )						Gross earnings	
	December 1993	September 1994	October 1994	November 1994		December 1994	December Quarter 1994	
	Persons	Persons	Persons	Males	Females	Persons	Persons	
PRIVATE								
Mining	17.0	16.1	15.5	13.8	1.5	15.3	15.6	253.0
Manufacturing	129.0	129.1	137.2	104.8	33.7	138.5	136.1	1,050.5
Electricity, gas and water; Construction	32.9	40.8	47.5	41.5	*6.0	47.5	48.3	369.7
Wholesale trade	62.9	55.3	56.3	42.2	15.4	57.6	59.6	441.5
Retail trade	151.9	133.0	143.4	67.8	77.6	145.4	148.2	643.2
Transport and storage	29.4	30.7	28.7	22.0	7.4	29.4	29.0	234.1
Finance, property and business services	94.7	76.9	82.6	39.0	46.1	85.2	84.3	581.8
Community services	81.8	92.3	95.1	27.7	68.7	96.4	97.6	566.8
Recreation, personal and other services(a)	90.0	84.0	97.7	36.8	60.6	97.4	100.1	421.7
<b>Total all industries(b)</b>	<b>689.6</b>	<b>658.3</b>	<b>704.4</b>	<b>395.7</b>	<b>317.1</b>	<b>712.8</b>	<b>719.1</b>	<b>4,564.0</b>
PUBLIC								
Agriculture, forestry, fishing and hunting	0.1	0.1	0.1	0.1	*0.0	0.1	0.1	0.7
Manufacturing	3.4	2.6	3.0	2.9	0.1	2.9	2.9	27.4
Electricity, gas and water; Construction	20.9	14.8	14.6	12.6	2.0	14.6	14.7	133.2
Wholesale trade	0.3	0.5	0.5	0.3	0.2	0.5	0.5	4.5
Retail trade	0.2	0.1	0.1	—	0.1	0.1	0.1	0.5
Transport and storage	20.9	19.2	20.6	18.3	2.3	20.6	20.5	209.0
Communication	15.9	16.5	16.8	12.0	5.0	17.0	17.8	180.4
Finance, property and business services	11.7	8.2	9.5	4.2	5.3	9.5	9.5	80.3
Public administration and defence(c)	60.3	63.6	63.3	42.0	21.6	63.5	64.6	490.7
Community services	141.6	139.4	139.2	54.0	88.7	142.7	140.6	1,062.6
Recreation, personal and other services	2.1	2.1	2.2	0.9	1.3	2.2	2.2	14.2
<b>Total all industries</b>	<b>277.4</b>	<b>267.2</b>	<b>269.9</b>	<b>147.2</b>	<b>126.4</b>	<b>273.7</b>	<b>273.6</b>	<b>2,203.4</b>
PRIVATE AND PUBLIC								
Mining	17.0	16.1	15.5	13.8	1.5	15.3	15.6	253.0
Manufacturing	132.4	131.7	140.2	107.6	33.8	141.4	139.0	1,077.9
Electricity, gas and water	12.4	11.4	11.2	9.7	1.5	11.2	11.4	106.5
Construction	41.5	44.3	50.9	44.4	*6.5	50.9	51.7	396.5
Wholesale trade	63.2	55.8	56.8	42.5	15.6	58.1	60.1	446.0
Retail trade	152.1	133.2	143.5	67.9	77.6	145.5	148.3	643.8
Transport and storage	50.3	50.0	49.2	40.2	9.7	49.9	49.6	443.1
Communication	16.0	16.6	17.1	12.1	5.2	17.3	18.1	182.0
Finance, property and business services	106.4	85.1	92.1	43.3	51.4	94.6	93.9	662.1
Public administration and defence(c)	60.3	63.6	63.3	42.0	21.6	63.5	64.6	490.7
Community services	223.4	231.7	234.3	81.7	157.4	239.0	238.1	1,629.4
Recreation, personal and other services(a)	92.1	86.1	99.9	37.7	61.9	99.6	102.2	435.9
<b>Total all industries(d)</b>	<b>967.1</b>	<b>925.6</b>	<b>974.3</b>	<b>543.0</b>	<b>443.5</b>	<b>986.5</b>	<b>992.7</b>	<b>6,767.4</b>

(a) Excludes private households employing staff. (b) Includes employees of private enterprises classified to Communication. (c) Excludes members of permanent defence forces and employees of overseas embassies, consulates etc. (d) Includes employees of government agencies classified to Agriculture, forestry, fishing and hunting.

TABLE 18. EMPLOYED WAGE AND SALARY EARNERS, SOUTH AUSTRALIA — SECTOR AND INDUSTRY

Industry	Number of employees ( '000)						Gross earnings	
	December 1993	September 1994	October 1994	November 1994		December 1994	December Quarter 1994	
	Persons	Persons	Persons	Males	Females	Persons	Persons	
PRIVATE								
Manufacturing	80.6	83.9	82.7	61.2	22.4	83.5	82.8	662.5
Electricity, gas and water; Construction	11.7	10.4	11.3	8.9	2.8	11.7	11.2	69.0
Wholesale trade	27.0	24.8	24.5	15.7	8.2	23.9	23.7	173.8
Retail trade	62.7	60.7	61.4	26.9	34.8	61.7	63.2	249.5
Transport and storage	*10.4	12.2	9.5	8.0	*2.4	10.4	10.5	85.9
Finance, property and business services	45.6	50.6	51.6	26.4	25.0	51.4	47.4	310.0
Community services	58.0	59.1	59.1	16.8	43.6	60.4	63.0	343.2
Recreation, personal and other services(a)	29.6	36.4	34.4	14.1	21.4	35.5	34.4	153.0
<b>Total all industries(b)(e)</b>	<b>328.0</b>	<b>340.7</b>	<b>337.4</b>	<b>180.4</b>	<b>161.0</b>	<b>341.3</b>	<b>339.1</b>	<b>2,077.9</b>
PUBLIC								
Manufacturing	2.0	2.0	2.0	1.8	0.2	2.1	2.1	17.4
Electricity, gas and water; Construction	11.1	8.6	8.5	7.3	1.2	8.5	8.5	86.1
Wholesale trade	0.2	0.2	0.1	0.1	—	0.2	0.2	1.3
Retail trade	—	—	—	—	—	—	—	0.2
Transport and storage	6.7	5.7	5.7	5.1	0.6	5.7	5.6	61.9
Communication	8.0	7.8	7.9	5.7	2.2	7.9	8.0	82.8
Finance, property and business services	9.3	8.3	8.2	3.6	4.5	8.1	8.1	68.3
Public administration and defence(c)	19.3	18.2	17.9	10.7	7.3	18.0	18.3	142.3
Community services	80.5	79.7	78.9	30.2	49.6	79.8	79.3	680.0
Recreation, personal and other services	2.8	2.2	2.9	1.2	1.6	2.8	2.8	20.1
<b>Total all industries(d)(e)</b>	<b>140.6</b>	<b>133.4</b>	<b>132.7</b>	<b>66.4</b>	<b>67.3</b>	<b>133.7</b>	<b>133.4</b>	<b>1,168.4</b>
PRIVATE AND PUBLIC								
Manufacturing	82.6	85.9	84.8	63.0	22.6	85.6	84.9	679.9
Electricity, gas and water	7.2	5.4	5.4	4.8	0.6	5.4	5.3	60.2
Construction	15.6	13.6	14.4	11.4	3.5	14.8	14.3	94.9
Wholesale trade	27.2	25.0	24.7	15.8	8.2	24.1	23.9	175.2
Retail trade	62.7	60.7	61.4	26.9	34.8	61.7	63.2	249.7
Transport and storage	17.2	17.8	15.2	13.1	*3.0	16.0	16.1	147.8
Communication	8.1	7.9	7.9	5.7	2.2	8.0	8.1	83.2
Finance, property and business services	54.9	58.9	59.8	30.0	29.6	59.5	55.4	378.3
Public administration and defence(c)	19.3	18.2	17.9	10.7	7.3	18.0	18.3	142.3
Community services	138.5	138.7	138.0	47.0	93.2	140.2	142.3	1,023.2
Recreation, personal and other services(a)	32.4	38.5	37.3	15.3	23.0	38.3	37.2	173.0
<b>Total all industries(d)(e)</b>	<b>468.7</b>	<b>474.1</b>	<b>470.1</b>	<b>246.8</b>	<b>228.3</b>	<b>475.0</b>	<b>472.5</b>	<b>3,246.3</b>

(a) Excludes private households employing staff. (b) Includes employees of private enterprises classified to Communication. (c) Excludes members of permanent defence forces and employees of overseas embassies, consulates etc. (d) Includes employees of government agencies classified to Agriculture, forestry, fishing and hunting. (e) Includes employees of enterprises classified to Mining.

TABLE 19. EMPLOYED WAGE AND SALARY EARNERS, WESTERN AUSTRALIA — SECTOR AND INDUSTRY

Industry	Number of employees ('000)						Gross earnings	
	December 1993	September 1994	October 1994	November 1994		December 1994	December Quarter 1994	
	Persons	Persons	Persons	Males	Females	Persons	Persons	\$m
<b>PRIVATE</b>								
Mining	18.5	20.7	21.3	18.2	3.0	21.2	21.5	292.1
Manufacturing	63.4	59.4	57.3	43.9	13.4	57.3	56.7	470.9
Electricity, gas and water; Construction	30.8	22.7	22.9	18.9	4.4	23.3	23.1	200.8
Wholesale trade	41.3	38.6	38.1	26.8	11.4	38.2	37.9	292.0
Retail trade	75.1	81.8	79.1	32.0	48.8	80.8	82.5	346.5
Transport and storage	13.6	*14.5	14.7	*9.7	*5.2	14.9	14.8	*132.5
Finance, property and business services	51.1	55.5	57.9	26.7	30.7	57.4	58.3	480.5
Community services	57.9	64.9	62.2	14.0	46.9	61.0	61.4	338.8
Recreation, personal and other services(a)	42.1	40.7	39.6	16.5	23.7	40.2	42.5	186.5
<b>Total all industries(b)</b>	<b>393.9</b>	<b>398.9</b>	<b>393.3</b>	<b>206.9</b>	<b>187.5</b>	<b>394.4</b>	<b>398.8</b>	<b>2,741.2</b>
<b>PUBLIC</b>								
Agriculture, forestry, fishing and hunting	1.5	1.3	1.3	1.0	0.3	1.4	1.4	13.3
Manufacturing	0.3	0.3	0.4	0.2	0.1	0.3	0.3	3.1
Electricity, gas and water; Construction	13.4	11.6	11.4	9.9	1.4	11.3	11.4	125.8
Wholesale trade	0.3	0.2	0.3	0.2	0.1	0.3	0.3	2.3
Retail trade	—	—	—	—	—	—	—	—
Transport and storage	8.6	7.7	7.0	6.4	0.6	7.0	7.0	72.6
Communication	8.3	8.4	8.4	5.9	2.6	8.5	8.6	88.6
Finance, property and business services	8.9	7.9	7.9	3.1	4.8	8.0	8.0	61.7
Public administration and defence(c)	27.7	29.9	30.3	18.2	12.5	30.7	31.7	263.7
Community services	86.0	84.2	89.7	33.5	57.1	90.6	89.8	752.1
Recreation, personal and other services	2.0	1.6	1.6	0.9	0.8	1.7	1.6	12.2
<b>Total all industries</b>	<b>157.1</b>	<b>153.2</b>	<b>158.3</b>	<b>79.3</b>	<b>80.4</b>	<b>159.6</b>	<b>160.1</b>	<b>1,395.1</b>
<b>PRIVATE AND PUBLIC</b>								
Mining	18.5	20.7	21.3	18.2	3.0	21.2	21.5	292.1
Manufacturing	63.7	59.7	57.6	44.1	13.5	57.7	57.0	474.0
Electricity, gas and water	8.9	8.4	8.2	7.2	0.9	8.1	8.2	92.7
Construction	35.3	26.0	26.2	21.6	4.9	26.5	26.3	233.9
Wholesale trade	41.6	38.9	38.4	27.0	11.5	38.4	38.1	294.3
Retail trade	75.1	81.8	79.1	32.0	48.8	80.8	82.5	346.5
Transport and storage	22.1	22.2	21.8	16.1	5.8	21.9	21.8	205.0
Communication	8.5	8.5	8.5	5.9	2.7	8.6	8.7	89.0
Finance, property and business services	60.0	63.4	65.8	29.8	35.6	65.4	66.3	542.3
Public administration and defence(c)	27.7	29.9	30.3	18.2	12.5	30.7	31.7	263.7
Community services	143.9	149.1	151.8	47.5	104.0	151.5	151.1	1,090.9
Recreation, personal and other services(a)	44.0	42.3	41.2	17.4	24.5	41.9	44.1	198.7
<b>Total all industries(d)</b>	<b>551.0</b>	<b>552.2</b>	<b>551.6</b>	<b>286.2</b>	<b>267.9</b>	<b>554.0</b>	<b>558.8</b>	<b>4,136.3</b>

(a) Excludes private households employing staff. (b) Includes employees of private enterprises classified to Communication. (c) Excludes members of permanent defence forces and employees of overseas embassies, consulates etc. (d) Includes employees of government agencies classified to Agriculture, forestry, fishing and hunting.

TABLE 20. EMPLOYED WAGE AND SALARY EARNERS, TASMANIA — SECTOR AND INDUSTRY

Industry	Number of employees ( '000)						Gross earnings	
	December 1993	September 1994	October 1994	November 1994		December 1994	December Quarter 1994	
	Persons	Persons	Persons	Males	Females	Persons	Persons	
PRIVATE								
Mining	2.1	1.7	1.7	1.6	0.1	1.7	1.7	29.8
Manufacturing	18.6	21.5	19.9	14.4	5.1	19.5	20.1	156.6
Electricity, gas and water; Construction	4.7	5.8	5.1	4.6	*0.8	5.4	5.4	41.3
Wholesale trade	9.2	7.6	6.3	4.8	1.4	6.2	6.2	41.6
Retail trade	22.1	17.7	18.8	8.9	10.2	19.1	19.0	82.8
Transport and storage	3.5	3.7	3.5	2.6	*1.0	3.6	3.6	28.3
Finance, property and business services	11.1	9.9	10.1	3.8	6.2	10.1	10.3	59.8
Community services	18.5	15.1	14.8	3.9	11.1	15.0	14.9	82.6
Recreation, personal and other services(a)	10.9	11.5	11.1	4.0	7.2	11.2	11.7	41.9
<b>Total all industries(b)</b>	<b>100.7</b>	<b>94.4</b>	<b>91.4</b>	<b>48.6</b>	<b>43.2</b>	<b>91.8</b>	<b>92.8</b>	<b>564.9</b>
PUBLIC								
Agriculture, forestry, fishing and hunting	0.7	0.6	0.6	0.5	0.1	0.6	0.6	5.3
Manufacturing	0.1	0.1	0.1	0.1	—	0.1	0.1	0.7
Electricity, gas and water; Construction	4.5	3.2	3.1	2.6	0.4	3.0	3.0	28.6
Wholesale trade	—	—	—	—	—	—	—	0.2
Retail trade	—	—	—	—	—	—	—	—
Transport and storage	2.0	1.2	1.3	1.2	0.1	1.3	1.3	12.4
Communication	2.2	2.3	2.2	1.7	0.5	2.2	2.3	24.7
Finance, property and business services	1.0	0.9	0.9	0.4	0.5	0.9	0.9	7.1
Public administration and defence(c)	9.7	9.8	9.9	6.2	3.9	10.1	10.3	83.6
Community services	26.3	26.0	26.6	9.7	17.5	27.1	26.0	211.0
Recreation, personal and other services	0.7	0.6	0.6	0.3	0.3	0.6	0.6	5.5
<b>Total all industries</b>	<b>47.2</b>	<b>44.8</b>	<b>45.4</b>	<b>22.7</b>	<b>23.3</b>	<b>46.0</b>	<b>45.2</b>	<b>379.1</b>
PRIVATE AND PUBLIC								
Mining	2.1	1.7	1.7	1.6	0.1	1.7	1.7	29.8
Manufacturing	18.7	21.5	20.0	14.4	5.2	19.6	20.2	157.3
Electricity, gas and water	3.4	2.3	2.2	1.9	0.2	2.2	2.2	22.1
Construction	5.8	6.7	6.0	5.3	*0.9	6.2	6.2	47.8
Wholesale trade	9.2	7.6	6.3	4.8	1.5	6.2	6.2	41.9
Retail trade	22.1	17.7	18.8	8.9	10.2	19.1	19.0	82.8
Transport and storage	5.5	4.9	4.8	3.8	*1.1	4.9	4.9	40.7
Communication	2.2	2.3	2.3	1.7	0.6	2.3	2.3	24.8
Finance, property and business services	12.1	10.8	11.0	4.3	6.7	11.0	11.1	66.9
Public administration and defence(c)	9.7	9.8	9.9	6.2	3.9	10.1	10.3	83.6
Community services	44.8	41.0	41.4	13.6	28.6	42.2	40.9	293.6
Recreation, personal and other services(a)	11.6	12.1	11.7	4.3	7.5	11.8	12.3	47.4
<b>Total all industries(d)</b>	<b>147.9</b>	<b>139.2</b>	<b>136.7</b>	<b>71.3</b>	<b>66.5</b>	<b>137.8</b>	<b>138.0</b>	<b>944.0</b>

(a) Excludes private households employing staff. (b) Includes employees of private enterprises classified to Communication. (c) Excludes members of permanent defence forces and employees of overseas embassies, consulates etc. (d) Includes employees of government agencies classified to Agriculture, forestry, fishing and hunting.

TABLE 21. EMPLOYED WAGE AND SALARY EARNERS, NORTHERN TERRITORY — INDUSTRY

Industry	Number of employees ('000)						Gross earnings	
	December 1993	September 1994	October 1994	November 1994		December 1994	December Quarter 1994	\$m
	Persons	Persons	Persons	Males	Females	Persons	Persons	
Mining	2.0	1.5	1.6	1.3	0.2	1.5	1.5	19.8
Manufacturing	1.8	2.0	2.0	1.4	0.6	2.0	2.0	13.7
Electricity, gas and water	0.9	0.9	0.9	0.8	0.2	0.9	0.9	9.8
Construction	2.9	2.4	2.4	2.1	0.4	2.5	2.5	27.7
Wholesale trade	1.7	2.5	2.9	2.0	1.1	3.1	3.0	22.0
Retail trade	8.0	8.6	9.6	4.5	4.9	9.4	9.6	43.7
Transport and storage	2.4	2.6	2.7	2.0	0.6	2.6	2.1	23.1
Communication	1.0	1.0	1.0	1.0	0.3	1.3	1.3	12.8
Finance, property and business services	*5.4	4.8	4.8	2.5	2.4	4.8	4.8	37.6
Public administration and defence(a)	6.5	6.1	6.3	3.5	2.8	6.3	6.3	60.6
Community services	15.8	20.1	19.5	8.2	11.4	19.5	19.5	155.3
Recreation, personal and other services(b)	5.1	7.7	7.4	3.3	4.0	7.3	7.4	43.6
<b>Total all industries(c)</b>	<b>53.4</b>	<b>60.2</b>	<b>61.1</b>	<b>32.4</b>	<b>28.9</b>	<b>61.3</b>	<b>60.9</b>	<b>469.7</b>

(a) Excludes members of permanent defence forces and employees of overseas embassies, consulates etc. (b) Excludes private households employing staff. (c) Includes employees of government agencies classified to Agriculture, forestry, fishing and hunting.

TABLE 22. EMPLOYED WAGE AND SALARY EARNERS, AUSTRALIAN CAPITAL TERRITORY — INDUSTRY

Industry	Number of employees ('000)						Gross earnings	
	December 1993	September 1994	October 1994	November 1994		December 1994	December Quarter 1994	\$m
	Persons	Persons	Persons	Males	Females	Persons	Persons	
Manufacturing	4.1	5.3	5.2	3.7	1.6	5.3	5.2	40.9
Electricity, gas and water	1.7	1.5	1.6	1.3	0.3	1.6	1.7	15.0
Construction	5.2	4.9	5.9	4.6	1.2	5.7	5.8	51.2
Wholesale trade	3.2	3.3	3.7	2.1	1.3	3.5	3.4	31.4
Retail trade	16.3	14.4	15.1	6.8	8.1	14.9	15.3	62.9
Transport and storage	*4.0	3.3	3.2	2.5	0.8	3.3	3.2	36.6
Communication	2.0	1.9	1.9	1.1	0.8	1.9	2.0	23.0
Finance, property and business services	13.4	13.5	13.3	7.0	6.3	13.3	13.3	112.8
Public administration and defence(a)	35.6	34.6	35.1	19.8	15.3	35.1	36.6	401.5
Community services	38.0	39.6	38.4	13.8	24.9	38.7	39.8	342.6
Recreation, personal and other services(b)	13.1	10.0	10.1	4.8	5.3	10.1	10.3	45.7
<b>Total all industries(c)</b>	<b>136.6</b>	<b>132.5</b>	<b>133.6</b>	<b>67.6</b>	<b>66.0</b>	<b>133.6</b>	<b>136.8</b>	<b>1,164.6</b>

(a) Excludes members of permanent defence forces and employees of overseas embassies, consulates etc. (b) Excludes private households employing staff. (c) Includes employees of enterprises classified to Mining and employees of government agencies classified to Agriculture, forestry, fishing and hunting.

TABLE 23. EMPLOYED WAGE AND SALARY EARNERS, PRIVATE SECTOR — EMPLOYER UNIT SIZE(a)

	<i>Less than 20 employees</i>		<i>20-99 employees</i>		<i>100 or more employees</i>		<i>Total</i>	
	<i>November 1994</i>	<i>December Quarter 1994</i>	<i>November 1994</i>	<i>December Quarter 1994</i>	<i>November 1994</i>	<i>December Quarter 1994</i>	<i>November 1994</i>	<i>December Quarter 1994</i>
	<i>Persons (‘000)</i>	<i>Gross Earnings (\$m)</i>	<i>Persons (‘000)</i>	<i>Gross Earnings (\$m)</i>	<i>Persons (‘000)</i>	<i>Gross Earnings (\$m)</i>	<i>Persons (‘000)</i>	<i>Gross Earnings (\$m)</i>
<b>AUSTRALIA BY INDUSTRY</b>								
Mining	4.0	36.7	5.6	71.3	52.5	812.6	62.0	920.7
Manufacturing	197.1	1,229.5	206.6	1,551.4	491.8	4,763.8	895.5	7,544.8
Electricity, gas and water	0.3	1.9	0.2	1.9	2.2	24.9	2.7	28.8
Construction	157.7	1,050.0	48.4	462.0	28.5	334.7	234.5	1,846.6
Wholesale trade	163.8	1,181.2	111.3	932.1	106.0	935.3	381.1	3,048.6
Retail trade	295.8	1,299.8	114.3	640.1	417.8	1,754.2	827.9	3,694.2
Transport and storage	64.4	405.8	51.9	423.8	63.8	676.7	180.0	1,506.2
Finance, property and business services	256.3	1,735.5	134.0	1,238.3	302.3	2,657.3	692.6	5,631.1
Community services	205.4	1,140.3	126.6	772.2	281.8	1,698.0	613.8	3,610.5
Recreation, personal and other services(b)	188.1	637.4	140.1	700.0	143.5	822.3	471.7	2,159.8
<b>Total all industries(c)</b>	<b>1,534.1</b>	<b>8,723.9</b>	<b>939.5</b>	<b>6,797.8</b>	<b>1,893.9</b>	<b>14,523.3</b>	<b>4,367.5</b>	<b>30,045.0</b>
<b>STATES AND TERRITORIES</b>								
New South Wales	514.6	3,008.3	302.8	2,316.7	720.8	5,693.6	1,538.2	11,018.6
Victoria	412.5	2,419.6	275.6	2,025.5	500.2	3,999.8	1,188.3	8,444.9
Queensland	267.2	1,433.6	141.3	965.6	304.3	2,164.7	712.8	4,564.0
South Australia	115.3	571.2	87.4	548.5	138.7	958.2	341.3	2,077.9
Western Australia	145.0	843.2	79.7	607.7	169.7	1,290.3	394.4	2,741.2
Tasmania	38.1	197.8	21.2	125.3	32.5	241.8	91.8	564.9
Northern Territory	13.6	80.4	16.1	101.3	10.3	74.7	40.0	256.4
Australian Capital Territory	27.7	169.7	15.4	107.2	17.5	100.2	60.6	377.1

(a) See Appendix 2 and paragraph 11 of Explanatory Notes. (b) Excludes private households employing staff. (c) Includes employees of private enterprises classified to Communication.

## EXPLANATORY NOTES

### Introduction

1. This publication contains results of the quarterly Survey of Employment and Earnings (SEE) which was introduced in the September quarter 1983. The survey is designed to obtain, from employer units, information on numbers of wage and salary earners employed each month and their quarterly earnings. It replaced the civilian employees series, based principally on information obtained from payroll tax returns, which was discontinued after April 1980.

### Scope of the survey

2. All wage and salary earners who received pay in any pay period ending within the quarter were represented in the survey, except:

- members of the permanent defence forces;
- employees of enterprises in the private sector primarily engaged in agriculture, forestry, fishing and hunting;
- employees in private households employing staff;
- employees of overseas embassies, consulates, etc;
- employees based outside Australia.

3. An indicator of the number of employed wage and salary earners out of scope to the year ended June 1994 is shown in the following table:

New South Wales	62,545
Victoria	43,046
Queensland	48,353
South Australia	19,673
Western Australia	25,000
Tasmania	9,802
Northern Territory	4,120
Australian Capital Territory	7,568
<hr/> Australia	<hr/> 220,107

Estimates of the number of employees in private sector agriculture and private households were derived from the Labour Force Survey while data relating to the number of permanent defence force members are based upon information supplied to the ABS by the Department of Defence.

### Statistical unit

4. The statistical unit for the survey comprises all activities of an employer in a particular State. Each statistical unit was classified to an industry: see paragraph 8 for more information on classification by industry. In addition, larger employers which are not currently split into separate statistical units are examined to decide

whether they should be split for the purpose of reporting their employees. Any changes in reporting arrangements as a result of such reviews can have an impact on the industry estimates at the time of their implementation.

### Survey methodology and design

5. This survey is conducted by mail each quarter from a sample of approximately 10,000 employer units. Of these, approximately 7,500 are in the private sector and 2,500 are in the public sector. However, data for a number of Commonwealth, ACT and NT Government departments are collected electronically.

6. Information on monthly number of employees and quarterly earnings is collected each quarter. For the first and last month of each quarter, only the total number of persons is collected; for the mid month of each quarter, details of males and females, full-time and part-time are collected.

7. Private sector statistical units are stratified by State, industry, and number of employees. Public sector statistical units are further stratified by institutional sector and level of government. An equal probability sample is selected from each stratum.

### Classification by industry

8. This publication presents statistics classified by industry. Each statistical unit is classified to an industry which reflects the predominant activity of the business in the State. In a small number of cases where a business has a significant number of employees in more than one industry, a separate statistical unit was created for each industry. Periodically, a review is undertaken to determine whether existing enterprises which are split into separate statistical units should continue to report on that basis.

9. The 1983 edition of the *Australian Standard Industrial Classification (ASIC)*, Volume 1 (1201.0) and Volume 2 (1202.0) has been used to classify the statistical units in the survey. Statistics in this publication are presented at ASIC division level only. However, data are available at a finer industry level on request.

### Standard Institutional Sector Classification of Australia (SISCA)

10. SISCA is a system for classifying institutional units by broad economic functions and is a key component of the general national accounting framework. For the purposes of these statistics the classification has been used to separate the public sector into public business enterprises (trading and financial) and general government enterprises. Certain public sector data have been classified by SISCA and are presented in Tables 8, 9 and 10.



### Employer unit size classification

11. Data presented in Table 23 show the distribution of employees in employer units over three size ranges. Over a period, the composition of these categories will vary as some employer units migrate from one size group to another due to changes in their employment levels.

### Reliability of estimates

12. Estimates are subject to sampling and non-sampling errors. For more information refer to Appendix 1 - Technical Note.

### Interpretation of estimates of movements

13. While estimates of employed wage and salary earners are presented in this publication for each month of the quarter, the survey is conducted quarterly and the sample of employer units is updated each quarter to reflect changes in the ABS register of business units, from which the sample is selected. These changes arise from the emergence of new businesses, takeovers and mergers, changes to industry classification, changes in the number of employees, and businesses which have ceased operations. Such updating of the register can contribute to changes in the estimates of employed wage and salary earners, and earnings.

14. Estimates of monthly movements within each quarter arise solely from changes in reported number of employees by employer units but movements between quarters also reflect changes resulting from updating the survey sample.

### Seasonal Adjustment

15. Seasonal adjustment is a means of removing the estimated effects of normal seasonal variation from the series so that the effects of other influences on the series can be more clearly recognised. Seasonal adjustment does not aim to remove the irregular or non-seasonal influences which may be present in any particular month. Influences that are volatile or unsystematic can still make it difficult to interpret the movement of the series even after adjustment for seasonal variation. This means that quarter-to-quarter movements of seasonally adjusted estimates may not be reliable indicators of trend behaviour.

16. The series have been seasonally adjusted from September 1983 and the historical series can be made available on request. The seasonal factors are reviewed annually to take account of each additional year's original data. The most recent review took place in the March quarter 1994.

17. Details about the method of seasonal adjustment of these series are available on request.

### Trend Estimates

18. The ABS considers that trend estimates provide a more reliable guide to the underlying direction of the data, and are more suitable than either the seasonally adjusted or original data for most business decisions and policy advice.

19. The trend estimates in this publication, obtained by dampening out the irregular component from the seasonally adjusted series, are calculated using the centred 13-term Henderson moving average. Estimates for the six most recent months cannot be calculated using this centred average method; instead an asymmetric average is used. This can lead to revisions in the trend estimates for the last six months when data become available for later months. Revisions of trend estimates will also occur with revisions to the original data and re-estimation of seasonal adjustment factors. Prior to the March quarter 1994 issue, trend estimates were calculated using a centred 23-term Henderson moving average of the seasonally adjusted series.

20. If a series is highly volatile then the trend estimates will be subject to greater revision for the latest few months as data become available. However, it is important to note that this does not make the trend series inferior to the seasonally adjusted or original series. In such cases the effect of the irregular component on overall movements will remain in the seasonally adjusted and the original estimates but not in the trend series.

21. For information about ABS procedures for deriving trend estimates and analysis of advantages of using them over alternative techniques for monitoring trends, refer to the ABS Information Paper:

- *A Guide to Interpreting Time Series - Monitoring 'Trends': an Overview* (1348.0); or contact the Assistant Director, Time Series Analysis on (06) 252 6345.

Two feature articles which have appeared in the ABS monthly publication *Australian Economic Indicators* (1350.0) may also be of interest:

- *Picking Turning Points in the Economy* (April 1991); and
- *Smarter Data Use* (March 1992).

### Comparability of results with the Labour Force Survey

22. The ABS publishes a number of independently obtained series of employment estimates.

23. The monthly Labour Force Survey (LFS) collects data by interview from a sample of about 29,000 private and non-private dwellings, using trained interviewers. Self-employed persons are included in the Labour Force Survey. The estimates are published in *The Labour Force, Australia, Preliminary* (6202.0) and *The Labour Force, Australia* (6203.0). There are conceptual and methodological reasons for differences in the estimates produced by the two surveys. These are discussed in an *Information Paper: Comparison of Employment Estimates from the Labour Force Survey and the Survey of Employment and Earnings* (6263.0).

24. Since the introduction of the SEE series in the September quarter 1983, the estimates of the number of wage and salary earners have been lower than those from the LFS. The difference between the two series started to widen during 1989 and has grown to its present level of approximately 665,000.

25. When making comparisons of the wage and salary earners components of the two surveys it must be borne in mind that SEE draws its sample from the ABS register of businesses while LFS is a household survey. Because of this it is important to note that, on occasions, the register can be subject to undercoverage of business units and that it can be affected by delays in the birth of new businesses to it. This can lead to undercoverage of samples selected from the register, such as SEE, but cannot for a household based collection, such as LFS. A study is being undertaken in order to identify the extent of undercoverage on the register.

26. Separate estimates of full-time and part-time employees are included in Table 11. For definitions of these terms, see Appendix 2 - Glossary. This table was first published in the June quarter 1987 issue of this publication. Information for previous quarters back to September 1983 is available on request. For the reasons outlined above in paragraph 25, it is difficult to compare estimates of full-time and part-time employees derived from the SEE with those produced from the LFS. Generally, the number of full-time employees is higher in the LFS series, and the number of part-time employees is higher in the SEE series. In the LFS, a person who works more than 35 hours a week in total in two (or more) part-time jobs is classified as working full-time. However, in this situation, the SEE would show two part-time jobs as having been filled.

27. The ABS considers that the Labour Force series provides the better indicator of overall employment movements at the Australian and State level. The aggregate employment estimates in the quarterly National Accounts are based on that source.

#### **Comparability of results with the Average Weekly Earnings survey**

28. The SEE collects total quarterly employee earnings primarily for use in estimating the gross domestic product component of the Australian National Accounts. Whilst average employee earnings can be derived from these data, the results will not be comparable with those from the Survey of Average Weekly Earnings (AWE) published in *Average Weekly Earnings, States and Australia* (6302.0). The SEE collects the sum of employee earnings paid in all pay periods ending in a quarter and the results will be affected by the varying number of pay periods from quarter to quarter, whereas the AWE relates to a specified pay period within a quarter and is not subject to

such influences. In addition, certain types of payments within the scope of the SEE, such as retrospective pay, pay in advance, leave loadings and severance, termination and redundancy payments are specifically excluded from the AWE. The SEE earnings data are also subject to seasonal variations particularly in December and March quarters due to the incidence of holidays taken in January being paid in advance and the earnings being reported in December quarter figures.

#### **Related publications**

29. Users may also wish to refer to the following publications which are available on request:

- *The Labour Force, Australia* (6203.0) — issued monthly
- *Average Weekly Earnings, Australia (Preliminary)* (6301.0) and *Average Weekly Earnings, States and Australia* (6302.0) — issued quarterly
- *Labour Statistics, Australia* (6101.0) — issued annually
- *A Guide to Labour Statistics* (6102.0) — issued 10 February 1986
- *Small Business in Australia 1993* (1321.0) — issued November 1993
- *Labour Force Projections, Australia, 1995-2011* (6260.0) — issued 27 July 1994.

30. Current publications produced by the ABS are listed in the *Catalogue of Publications and Products, Australia* (1101.0). The ABS also issues, on Tuesdays and Fridays, a *Release Advice* (1105.0) which lists publications to be released within the next few days. The Catalogue and Release Advice are available from any ABS office.

#### **Unpublished statistics**

31. In some cases, the ABS can also make available other information which is not published. This information may be made available on a number of media such as microfiche, photocopy, data tape, computer printout, floppy disk and customised reports. Generally, a charge is made for providing unpublished information. Inquiries should be made to the contact officer whose name appears in the Inquiries box at the front of this publication.

#### **Symbols and other usages**

- nil or rounded to zero
- \* subject to sampling variability too high for most practical purposes. See paragraph 3 of Appendix 1 - Technical Note

Where figures have been rounded, discrepancies may occur between sums of the component items and totals.

## APPENDIX 1 - TECHNICAL NOTE

### Reliability of estimates

1. Estimates for both the private and public sectors in this publication are subject to sampling variability because they are based on information relating to a sample of employer units rather than a full enumeration, (i.e. they may differ from the figures that would have been produced if the information had been obtained from all employer units). This difference, called sampling error, should not be confused with inaccuracy that may occur because of imperfections in reporting by respondents or in processing by the ABS; such inaccuracy is referred to as non-sampling error and may occur in any enumeration, whether it be a full count or sample. Efforts have been made to reduce the non-sampling error by careful design of questionnaires, detailed checking of returns and quality control of processing.

2. The sampling error associated with any estimate can be estimated from the sample results. One measure of sampling error is given by the *standard error* which indicates the degree to which an estimate may vary from the value that would have been obtained from a full enumeration (the 'true' figure). There are about two chances in three that a sample estimate differs from the true value by less than one standard error, and about nineteen chances in twenty that the difference will be less than two standard errors.

3. If the standard error of an estimate is large relative to the size of the estimate, the usefulness of that estimate is seriously impaired. For the tables in this publication, estimates with standard errors greater than 25 per cent of the estimate have been labelled with an asterisk.

4. Standard errors of estimates of *level*, by industry, are shown in Table A for the private sector and Table B for the public sector and relate only to the third month of the quarter. As the survey is conducted quarterly from a common sample of employer units, who report details of employees for each month of the quarter, standard errors

on all estimates for total persons employed in each month are of a similar magnitude.

5. Standard errors of estimates of *movements*, provide a measure of the reliability of changes in the level of an estimate. Tables A and B show standard errors for movements in the level of estimates for the private and public sectors respectively for persons between the third month of successive quarters. Annual movement standard errors are also shown and relate to March 1992 - March 1993 movements.

6. An example of the use of standard error on *levels* is as follows. If the estimated number of wage and salary earners was 5,800,000 with a standard error of 34,000, then there would be about two chances in three that a full enumeration would have given a figure in the range 5,766,000 to 5,834,000 and about nineteen chances in twenty that it would be in the range 5,732,000 to 5,868,000.

7. An example of the use of standard error on *movements* is as follows. If the estimated standard error for a quarterly change estimate of wage and salary earners was 15,000 and the quarterly change estimate between two quarters was 40,000 persons, then there would be about two chances in three that a full enumeration would have given a quarterly change estimate in the range 25,000 to 55,000 persons and about nineteen chances in twenty that it would be in the range 10,000 to 70,000 persons.

8. Quarterly movements in estimates of employed wage and salary earners are considered to be statistically significant where they exceed two standard errors.

9. Standard errors for earnings are approximately the same relative size as standard errors for number of employees. Detailed standard errors for both employment and earnings are available on request.

**TABLE A. EMPLOYED WAGE AND SALARY EARNERS, STATES AND TERRITORIES — PRIVATE SECTOR :  
STANDARD ERRORS, DECEMBER 1994, PERSONS  
(\*000)**

<i>Industry</i>	<i>NSW</i>	<i>Vic.</i>	<i>Qld</i>	<i>SA</i>	<i>WA</i>	<i>Tas.</i>	<i>NT</i>	<i>ACT</i>	<i>Aust.</i>
<b>LEVEL</b>									
Mining	1.1	0.6	0.9	0.6	1.0	0.1	0.1	—	1.9
Manufacturing	12.1	12.9	8.1	4.9	3.9	1.1	0.1	0.4	20.4
Construction	11.2	8.3	7.9	1.4	3.7	1.1	0.3	0.8	16.5
Wholesale trade	8.4	9.2	5.2	2.2	2.7	0.6	0.3	0.3	13.9
Retail trade	18.6	11.7	10.2	4.9	6.2	1.7	1.7	1.3	25.6
Transport and storage	8.9	10.7	4.6	2.2	3.5	0.5	0.3	0.5	15.3
Finance, property and business services	17.1	17.9	6.0	4.5	5.3	0.7	0.5	1.0	26.4
Community services	20.1	15.1	9.2	7.8	7.6	1.8	1.4	1.9	29.0
Recreation, personal and other services(a)	11.9	12.4	10.7	4.3	4.1	0.9	1.1	1.0	21.2
<b>Total all industries(b)</b>	<b>40.1</b>	<b>35.7</b>	<b>22.6</b>	<b>12.6</b>	<b>13.8</b>	<b>3.2</b>	<b>2.5</b>	<b>2.9</b>	<b>61.4</b>
<b>QUARTERLY MOVEMENT</b>									
Mining	0.6	—	1.6	0.3	0.8	0.1	—	—	1.9
Manufacturing	8.1	8.5	6.4	3.8	3.2	0.8	0.1	0.2	14.3
Construction	5.3	4.4	4.5	0.7	2.3	0.6	0.1	0.6	8.6
Wholesale trade	4.7	4.8	3.7	1.6	3.3	0.4	0.2	0.3	8.5
Retail trade	11.0	6.5	8.1	2.5	2.4	1.1	1.5	0.8	15.6
Transport and storage	5.4	5.9	2.5	1.5	1.7	0.2	0.4	0.1	8.7
Finance, property and business services	10.0	8.4	3.8	4.7	2.6	0.4	0.2	0.9	14.6
Community services	11.7	9.6	5.6	3.8	6.9	1.2	1.7	1.7	18.2
Recreation, personal and other services(a)	6.5	7.7	7.6	2.1	2.0	0.5	0.4	0.5	13.0
<b>Total all industries(b)</b>	<b>23.3</b>	<b>20.4</b>	<b>15.8</b>	<b>8.2</b>	<b>9.8</b>	<b>2.1</b>	<b>2.4</b>	<b>2.2</b>	<b>37.3</b>
<b>ANNUAL MOVEMENT(c)</b>									
Mining	0.9	0.9	2.1	0.2	1.3	0.1	0.4	—	2.8
Manufacturing	6.4	9.1	4.2	2.3	3.5	0.6	0.2	0.6	12.6
Construction	5.1	7.5	4.1	1.3	4.8	0.6	2.1	1.2	11.4
Wholesale and Retail trade	16.2	10.6	8.9	6.3	4.0	2.1	1.1	1.7	23.0
Transport and storage	5.0	4.8	2.1	4.7	2.4	0.3	1.4	0.3	9.1
Finance, property and business services	12.3	6.5	6.5	3.2	5.8	0.8	2.2	1.2	16.9
Community services	7.3	10.5	7.1	4.5	3.4	1.0	1.5	1.0	15.9
Recreation, personal and other services(a)	12.0	6.8	5.5	3.2	3.8	0.9	1.1	1.6	15.8
<b>Total all industries(b)</b>	<b>26.5</b>	<b>21.8</b>	<b>15.9</b>	<b>10.5</b>	<b>10.9</b>	<b>2.8</b>	<b>4.0</b>	<b>3.1</b>	<b>41.2</b>

(a) Excludes private households employing staff. (b) Includes employees of private enterprises classified to Communication. (c) See paragraph 5 in Appendix 1.

**TABLE B. EMPLOYED WAGE AND SALARY EARNERS, STATES AND TERRITORIES — PUBLIC SECTOR :**  
**STANDARD ERRORS, DECEMBER 1994, PERSONS**  
 ('000)

<i>Industry</i>	<i>NSW</i>	<i>Vic.</i>	<i>Qld</i>	<i>SA</i>	<i>WA</i>	<i>Tas.</i>	<i>NT</i>	<i>ACT</i>	<i>Aust.</i>
<b>LEVEL</b>									
Agriculture, forestry, fishing and hunting	—	—	—	—	—	—	—	—	—
Mining	—	—	—	—	—	—	—	—	—
Manufacturing	0.6	1.4	0.1	—	—	—	—	—	1.5
Electricity, gas and water	0.1	0.2	0.2	—	—	—	—	—	0.3
Construction	1.5	0.8	—	—	—	—	—	—	1.7
Wholesale trade	—	—	—	—	—	—	—	—	—
Retail trade	—	—	—	—	—	—	—	—	—
Transport and storage	1.0	0.8	—	—	—	—	—	—	1.3
Communication	—	—	—	—	—	—	—	—	—
Finance, property and business services	0.2	0.5	0.1	0.1	—	—	—	—	0.5
Public administration and defence(a)	3.9	1.9	1.1	1.2	1.1	0.1	0.1	0.1	4.8
Community services	1.4	4.6	0.8	0.6	0.8	—	—	—	5.0
Recreation, personal and other services	—	—	—	0.1	—	—	—	—	0.1
<b>Total all industries</b>	<b>3.7</b>	<b>4.8</b>	<b>1.4</b>	<b>1.2</b>	<b>0.6</b>	<b>0.1</b>	<b>0.1</b>	<b>0.1</b>	<b>6.4</b>
<b>QUARTERLY MOVEMENT</b>									
Agriculture, forestry, fishing and hunting	—	—	—	—	—	—	—	—	—
Mining	—	—	—	—	—	—	—	—	—
Manufacturing	0.5	1.1	0.1	—	—	—	—	—	1.2
Electricity, gas and water	—	0.1	0.1	—	—	—	—	—	0.2
Construction	0.8	0.5	—	—	—	—	—	—	0.9
Wholesale trade	—	—	—	—	—	—	—	—	—
Retail trade	—	—	—	—	—	—	—	—	—
Transport and storage	0.4	0.5	—	—	0.3	—	—	—	0.7
Communication	—	—	—	—	—	—	—	—	—
Finance, property and business services	0.1	0.3	0.1	0.1	—	—	—	—	0.3
Public administration and defence(a)	1.9	1.3	0.3	0.7	0.4	0.2	0.1	0.1	2.5
Community services	0.8	1.1	3.1	0.3	0.3	—	—	0.1	3.4
Recreation, personal and other services	—	—	—	0.1	—	—	—	—	0.1
<b>Total all industries</b>	<b>1.7</b>	<b>1.5</b>	<b>3.1</b>	<b>0.7</b>	<b>0.4</b>	<b>0.2</b>	<b>0.1</b>	<b>0.2</b>	<b>3.9</b>
<b>ANNUAL MOVEMENT(c)</b>									
Agriculture, forestry, fishing and hunting	—	—	—	—	—	—	—	—	—
Mining	—	—	—	—	—	—	—	—	—
Manufacturing	0.5	0.8	—	—	—	—	—	—	1.0
Electricity, gas and water	0.1	0.1	0.1	—	—	—	—	—	0.2
Construction	—	0.6	—	—	—	—	—	—	0.6
Wholesale and Retail trade	—	—	—	0.2	—	—	—	—	0.2
Transport and storage	0.1	0.6	0.1	—	—	—	—	—	0.7
Communication	—	—	—	5.5	0.1	—	—	—	5.5
Finance, property and business services	0.6	0.3	—	—	—	0.1	—	—	0.6
Public administration and defence(a)	0.5	1.1	2.1	0.7	0.2	0.2	—	—	2.5
Community services	2.4	0.9	0.9	0.7	0.3	—	0.2	—	2.9
Recreation, personal and other services	0.5	—	—	0.2	—	—	—	—	0.6
<b>Total all industries</b>	<b>2.8</b>	<b>1.9</b>	<b>2.3</b>	<b>5.5</b>	<b>0.3</b>	<b>0.2</b>	<b>0.2</b>	<b>0.1</b>	<b>6.9</b>

(a) Excludes members of permanent defence forces and employees of overseas embassies, consulates etc. (b) See paragraph 5 in Appendix 1.

## APPENDIX 2 - GLOSSARY

*Commonwealth government employees.* Persons employed by all departments, agencies and authorities created by or reporting to the Commonwealth Parliament, including trading bodies such as banks, airlines and communications bodies. Those bodies run jointly by Commonwealth and State governments are classified to Commonwealth.

*Employer units* are the statistical units which make up the population from which the sample was drawn (see paragraph 4 of the Explanatory Notes).

*Employer unit size.* To derive estimates of employer unit size, each of the approximately 7,500 private sector employer units is allocated a size classification based on the number of employees actually reported for the middle month of the quarter. The size classification reflects the size of a business in a particular State/Territory and not necessarily the size of a business Australia wide.

*Full-time employees.* Permanent, temporary and casual employees who normally work the agreed or award hours for a full-time employee in their occupation and who received pay for any part of the reference period. If agreed or award hours do not apply, employees are regarded as full-time if they ordinarily work 35 hours or more per week.

*General government enterprises.* Public sector enterprises mainly engaged in the production of goods and services, outside the normal market mechanisms, providing these goods and services to the general public. The costs of operations are often financed from public revenues, e.g. Government Departments.

*Gross earnings.* Payments to employees before tax and other items (such as superannuation) are deducted. They comprise amounts paid from interstate or overseas; ordinary time and overtime earnings; overaward payments; penalty payments, shift and other remunerative allowances; commissions and retainers; bonuses and similar payments; payments under incentive or piecework; payments under profit-sharing schemes; leave loadings; annual and long service leave payments; sick leave payments; advance and retrospective payments; salaries and fees paid to company directors, members of boards, committees, commissions, councils, etc.; amounts paid to employees on workers' compensation who continue to be paid through the payroll; and severance, termination and redundancy payments.

*Industry.* Industry is classified according to the *Australian Standard Industrial Classification (ASIC) 1983 Edition* (1201.0).

*Institutional sector.* Institutional sector is classified according to the *Standard Institutional Sector Classification of Australia (SISCA) 1987 Edition* (1218.0).

*Local government employees.* Persons employed by municipalities and shires and other local authorities created by or subject to the provisions of local government legislation, such as county councils in New South Wales.

*Number of employees.* All wage and salary earners who received pay for any part of the relevant pay period. All permanent, temporary, casual, managerial and executive employees are included. Part-time and casual employees who may have worked only a few hours during the reference period are included. Employees on paid leave and those employees on workers' compensation who continue to be paid through the employer's payroll are also included. Casual employees who work on an irregular basis and who were not paid during the relevant pay period, employees on leave without pay, on strike or stood down without pay for the whole of the pay period are excluded.

*Part-time employees.* Permanent, temporary and casual employees who are not classified as full-time employees as defined.

*Public employees.* Administrative employees and all other employees of Commonwealth, State and Local government businesses and financial undertakings engaged in services such as railways, road transport, banks, postal and telecommunications, air transport, education, radio, television, police, public works, factories, marketing authorities, hospitals and welfare institutions.

*Public financial enterprises.* Public sector enterprises actively involved in financial market transactions such as borrowing and lending. Excluded are those public bodies whose funds flow directly to or from general government revenue.

*Public trading enterprises.* Public sector enterprises predominantly engaged in the production of goods and services with an intention of maximising profits and financial returns with most operating costs being derived from trading activities.

*Reference period for the number of employees.* The last pay period ending on or before the third Friday in each month.

*Reference period for earnings.* All pay periods for which the end of the pay period falls within the quarter.

*Sector.* Public sector includes local government authorities and all government departments, agencies and authorities created by, or reporting to the Commonwealth and State Parliaments. All remaining employees are classified as private sector.

*State government employees.* Persons employed by all State government departments and authorities created by, or reporting to, State Parliaments, including organisations for which the Commonwealth has assumed financial responsibility, e.g. universities. Following self-government, the Northern Territory and the Australian Capital Territory administrations have been classified to 'State' governments. Employees of State governments employed interstate are included in the estimates of the State in which they are based.





## *For more information ...*

The ABS publishes a wide range of statistics and other information on Australia's economic and social conditions. Details of what is available in various publications and other products can be found in the *ABS Catalogue of Publications and Products* available at all ABS Offices (see below for contact details).

### **Information Consultancy Service**

Information tailored to special needs of clients can be obtained from the Information Consultancy Service available at ABS Offices (see Information Inquiries below for contact details).

### **ABS Products**

A large number of ABS products is available from ABS bookshops (see below Bookshop Sales for contact details). The ABS also provides a subscription service — you can telephone the ABS Subscription Service Australia wide toll free on 1800 02 0608.

### **National Dial-a-Statistic Line**

**0055 86 400**

(Steadycom P/L; premium rate 25c/21.4 secs.)

This number gives 24-hour access, 365 days a year, for a range of statistics.

### **Electronic Services**

A large range of data is available via on-line services, diskette, magnetic tape, tape cartridge and CD ROM. For more details about these electronic data services contact any ABS Office (see below) or e-mail us at:

Keylink            STAT.INFO/ABS  
X.400            (C:AU,A:TELMEMO,O:ABS,SN:INFO,FN:STAT)  
Internet          STAT.INFO@ABS. TELEMemo.AU or

you can visit us on Internet at: <http://www.statistics.gov.au>

## *Sales and Inquiries*

<b>Regional Offices</b>	<b>Information Inquiries</b>	<b>Bookshop Sales</b>
SYDNEY (02)	268 4611	268 4620
MELBOURNE (03)	9615 7755	9615 7755
BRISBANE (07)	3222 6351	3222 6350
PERTH (09)	360 5140	360 5307
ADELAIDE (08)	237 7100	237 7582
HOBART (002)	20 5800	20 5800
CANBERRA (06)	252 6627	207 0326
DARWIN (089)	43 2111	43 2111
<b>National Office</b>		
ACT (06)	252 6007	008 020 608



Information Services, ABS, PO Box 10, Belconnen ACT 2616



**2624800012940**

ISSN 0814-6195

Recommended retail price: \$18.00